

UFR Quick Setup Guide for Windows XP

Canon Color Color Network UFR Printer Kit-C1

The Canon logo is displayed in a bold, black, sans-serif font. The letter 'C' is significantly larger and more stylized than the other letters, which are in a standard weight.

Mar 18 2004

Application

This manual has been issued by Canon Inc. for qualified persons to learn technical theory, installation, maintenance, and repair of products. This manual covers all localities where the products are sold. For this reason, there may be information in this manual that does not apply to your locality.

Corrections

This manual may contain technical inaccuracies or typographical errors due to improvements or changes in products. When changes occur in applicable products or in the contents of this manual, Canon will release technical information as the need arises. In the event of major changes in the contents of this manual over a long or short period, Canon will issue a new edition of this manual.

The following paragraph does not apply to any countries where such provisions are inconsistent with local law.

Trademarks

The product names and company names used in this manual are the registered trademarks of the individual companies.

Copyright

This manual is copyrighted with all rights reserved. Under the copyright laws, this manual may not be copied, reproduced or translated into another language, in whole or in part, without the written consent of Canon Inc.

COPYRIGHT © 2001 CANON INC.










Printed in Japan

Caution

Use of this manual should be strictly supervised to avoid disclosure of confidential information.



Symbols Used

This documentation uses the following symbols to indicate special information:

Symbol	Description
	Indicates an item of a non-specific nature, possibly classified as Note, Caution, or Warning.
	Indicates an item requiring care to avoid electric shocks.
	Indicates an item requiring care to avoid combustion (fire).
	Indicates an item prohibiting disassembly to avoid electric shocks or problems.
	Indicates an item requiring disconnection of the power plug from the electric outlet.
 Memo	Indicates an item intended to provide notes assisting the understanding of the topic in question.
 REF.	Indicates an item of reference assisting the understanding of the topic in question.
	Provides a description of a service mode.
	Provides a description of the nature of an error indication.

The following rules apply throughout this Service Manual:

1. Each chapter contains sections explaining the purpose of specific functions and the relationship between electrical and mechanical systems with reference to the timing of operation.

In the diagrams,  represents the path of mechanical drive; where a signal name accompanies the symbol, the arrow  indicates the direction of the electric signal.

The expression "turn on the power" means flipping on the power switch, closing the front door, and closing the delivery unit door, which results in supplying the machine with power.

2. In the digital circuits, '1' is used to indicate that the voltage level of a given signal is "High", while '0' is used to indicate "Low". (The voltage value, however, differs from circuit to circuit.) In addition, the asterisk (*) as in "DRMD*" indicates that the DRMD signal goes on when '0'.

In practically all cases, the internal mechanisms of a microprocessor cannot be checked in the field. Therefore, the operations of the microprocessors used in the machines are not discussed: they are explained in terms of from sensors to the input of the DC controller PCB and from the output of the DC controller PCB to the loads.

The descriptions in this Service Manual are subject to change without notice for product improvement or other purposes, and major changes will be communicated in the form of Service Information bulletins.

All service persons are expected to have a good understanding of the contents of this Service Manual and all relevant Service Information bulletins and be able to identify and isolate faults in the machine."

Contents

第 1 章 UFR Setup Guide for WinXP

1.1 Overview	2
1.2 Items to Prepare and Points to Note	3
1.3 Connecting the Network Cable	4
1.4 Collecting Information Before Making Settings	5
1.5 Installing the Printer Drivers	11
1.6 Difference Between LPR Port and Standard TCP/IP Port	23
1.7 Installing the LPR Port (UNIX Print service) Components	24
1.8 Canon LPR2	33
1.9 Installing Canon LPR2	36
1.10 Useful Operations	46
1.11 Switching Between RAW and LPR	50
1.12 Remedy for Faults Caused by the Environment (30 client PCs or more)	52

Chapter 1 UFR Setup

Guide for WinXP

The following discussions relate to connection to a network in a Windows XP environment using the UFR printer driver and standard TCP/IP settings:

UFR is a PDL used to print on an iR C6800 or iR C6800N from a PC.

- In the case of the iR C6800, this function will become available when a Canon Color Network UFR Printer Kit-C1 (optional) is installed. (The function comes as standard with the iR C6800N.)

RAW mode is used for printing through port 9100.

- If the network uses firewall software or uses a router, or it is a WAN or VPN, you must make settings so that port 9100 is valid for use of RAW mode.
- The appropriate settings will automatically be made when printer drivers are installed.

1.2 Items to Prepare and Points to Note

0006-2898

You will need the following when installing printer drivers:

Canon Color Network UFR Printer Kit-C1

(optional for iR C6800; standard for iR C6800N)

- User Software CD-ROM (included with Canon Color Network UFR Printer Kit-C1)

For more information, see the following documentation that comes with the iR C6800, iR C6800N.

- iR C6800/C6800N [Reference Guide]
- iR C6800/C6800N [Network Quick Start Guide]
- iR C6800/C6800N [Printer Guide] (Included in [User Manual CD-ROM].)

1.3 Connecting the Network Cable

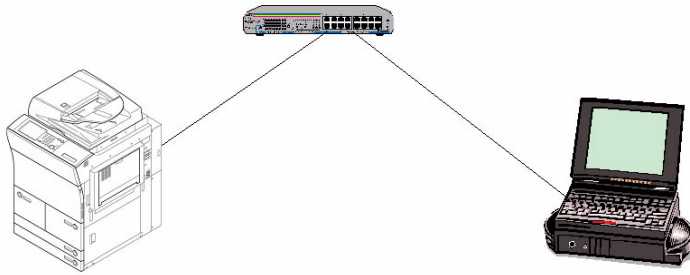
0006-2900

Connect the network cable.

<10Base-T/100Base-T>

- Have a LAN cable on hand (straight, for 10Base-T/100Base-T).
- Connect the cable connector to an open port of the HUB.
- Connect the other cable connector to the iR C6800.

Sample Connection

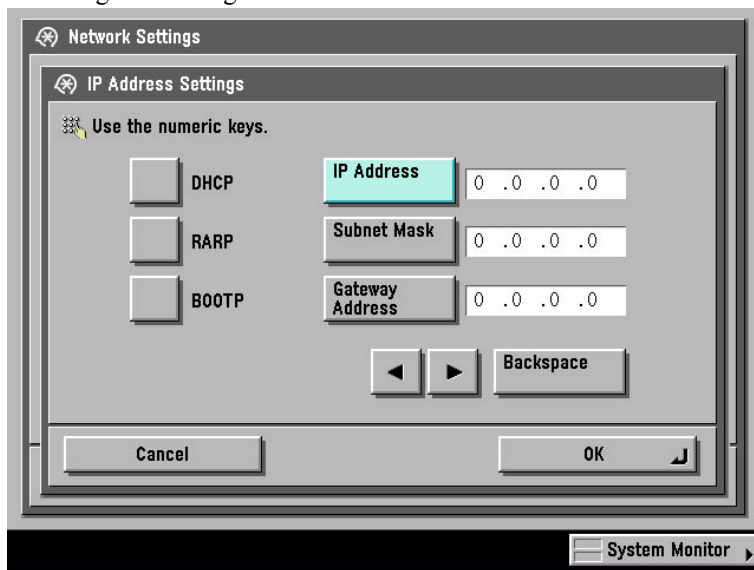


F-1-1

<iR C6800>

- 1) Find out the IP address that has been set to the printer:
 1. turn on the power.
 2. click [Ad Func].
 3. click [System Settings].
 4. click [Network Settings].
 5. click [TCP/IP Settings].
 6. click [IP Address Settings].(When you have found out the IP address, click [Cancel] to end.)

Checking and Setting the IP Address



F-1-2

- 2) Use the IP address when setting up the network connection on the PC later.

Check the Settings Made on the iR C6800 by Printing a User Data List

- make the following selections: Ad Func>Report Settings>Network>User's Data List>Yes
- see that a user data list (network) has been printed.

Note:

You can also check the IP address using the printed data list.

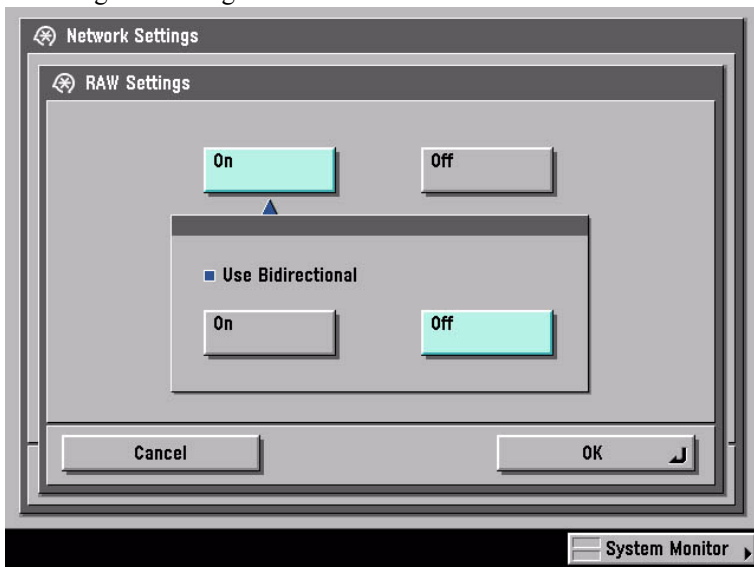
If no IP address has been set, set it on the control panel, and click [OK].

After making the selections, turn off the power, turn off the main power, and then turn on the main power.

3) Obtain the RAW setting of the printer:

1. turn on the power.
 2. click [Ad Func].
 3. click [System Settings].
 4. click [Network Settings].
 5. click [TCP/IP Settings].
 6. click Downward arrow button.
 7. click [RAW Settings].
 8. check to see that the notation is [On].
- (After making the check, click [Cancel] to end.)

Checking and Setting RAW



F-1-3

- If the notation of [RAW Settings] was [Off], click [On] then [OK] to change the setting.

Note:

Leave [Use Bidirectional] as it is.

- hen you have changed the settings, turn off the power, turn off the main power, and then turn on the main power.

<Windows PC>

Opening Properties for the Network Connection

Windows XP Display

standard at install at time of category display

- start>Control Panel>Network and Internet Connections>Network Connections>any connection name (here, Local Area Connection)>Properties.

Classic Display

- start>Settings>Control Panel>Network Connection>any connection name (here, Local Area Connection)>Properties

Windows 2000 Display

- Start>Settings>Control Panel>Network and Dial-up>Connections>Properties

Check to see that the network interface card name (here, 3com 3C918 Integrated Fast Ethernet Controller (3C905B-TX Compatible)) and TCP/IP are indicated.

- 1) Make the following selections: start>Control Panel.



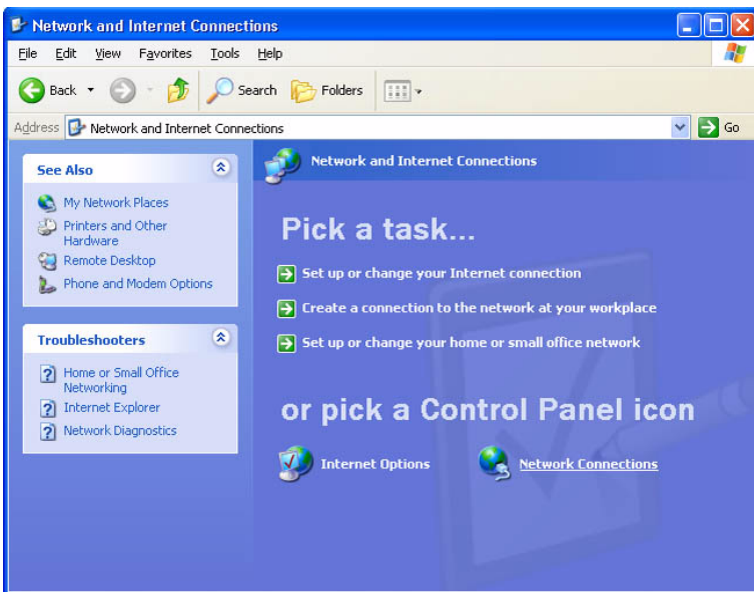
F-1-4

- 2) Select and click [Network and Internet Connections].



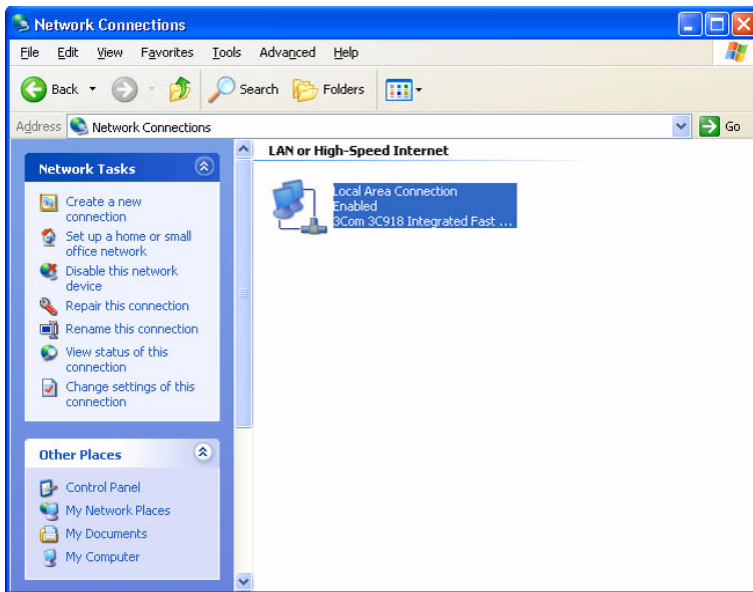
F-1-5

3) Select and click [Network Connections].



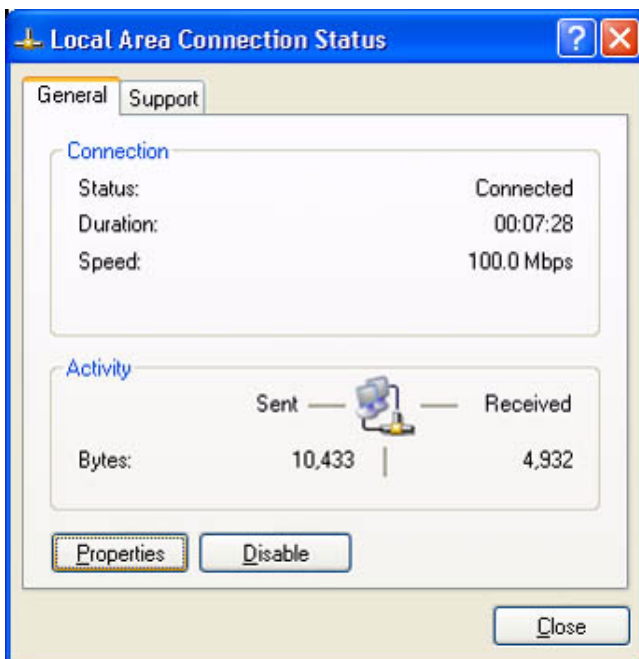
F-1-6

4) Select and double-click [Local Area Connection].



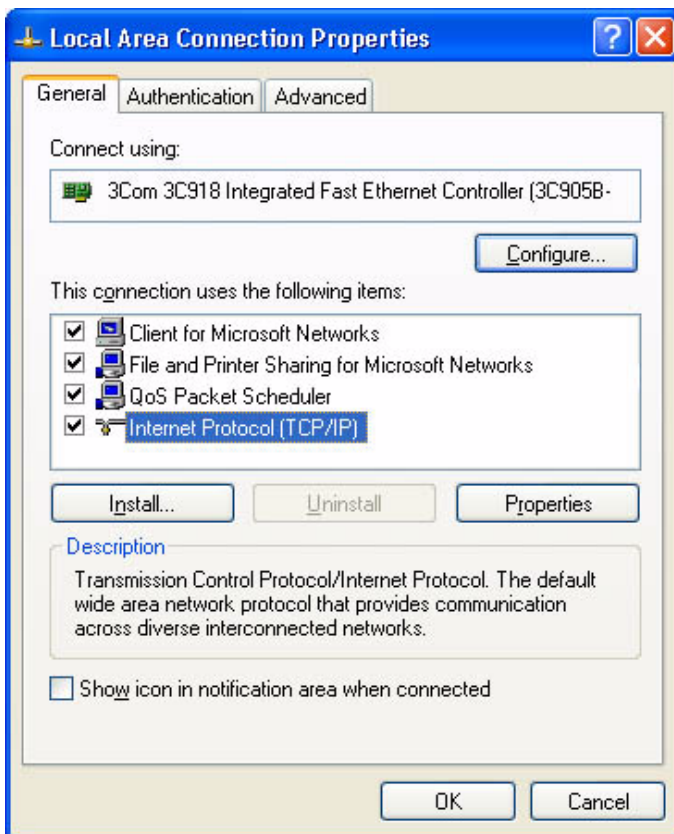
F-1-7

5) Click [Properties].



F-1-8

6) Check the name of the network interface card and TCP-IP.



F-1-9

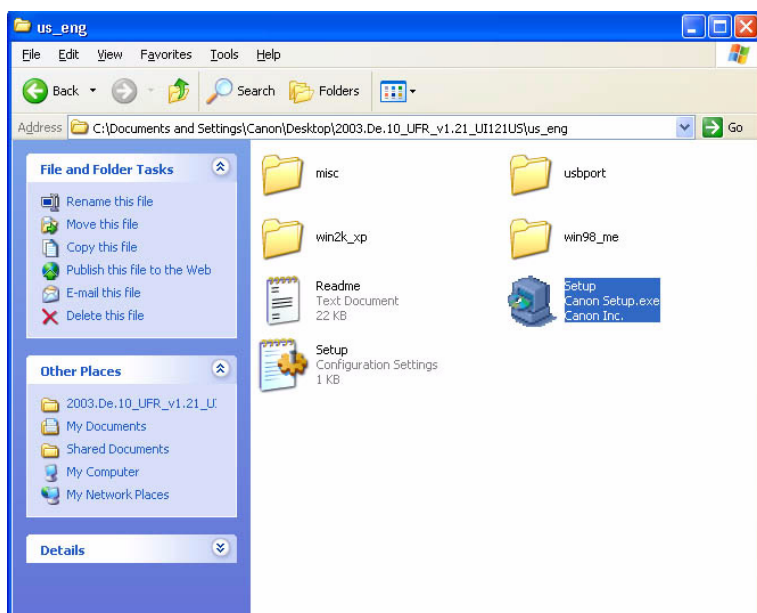
1.5 Installing the Printer Drivers

0006-2902

- 1) Insert the User Software CD-ROM in the CD-ROM drive. When the UFR CD-ROM Setup screen has appeared, select and click [Install Printer Drivers].

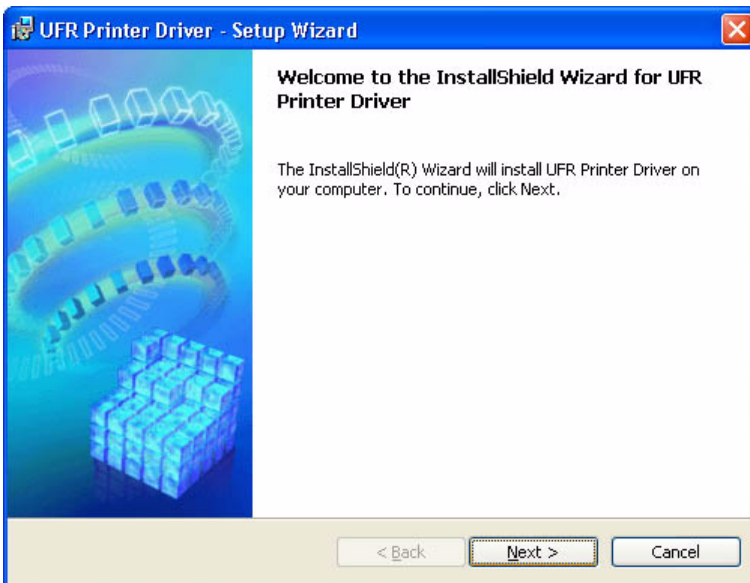
Note:

If the UFR CD-ROM Setup screen does not automatically appear after inserting the User Software CD-ROM in the drive, find the Setup executable, labeled [Setup] or [Setup.exe], and double-click the executable, from the CD-ROM.



F-1-10

- 2) Click [Next].



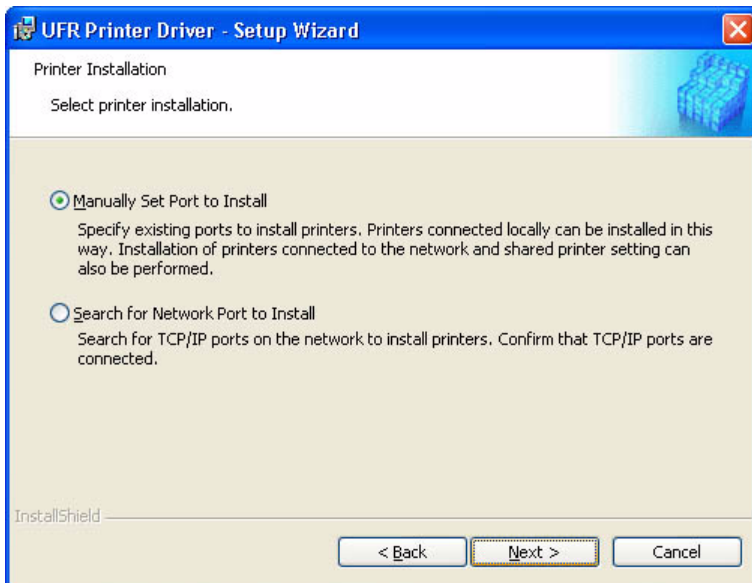
F-1-11

3) Select [I accept the terms in the license agreement], and click [Next].



F-1-12

4) Select [Manually Set Port to Install], and click [Next].



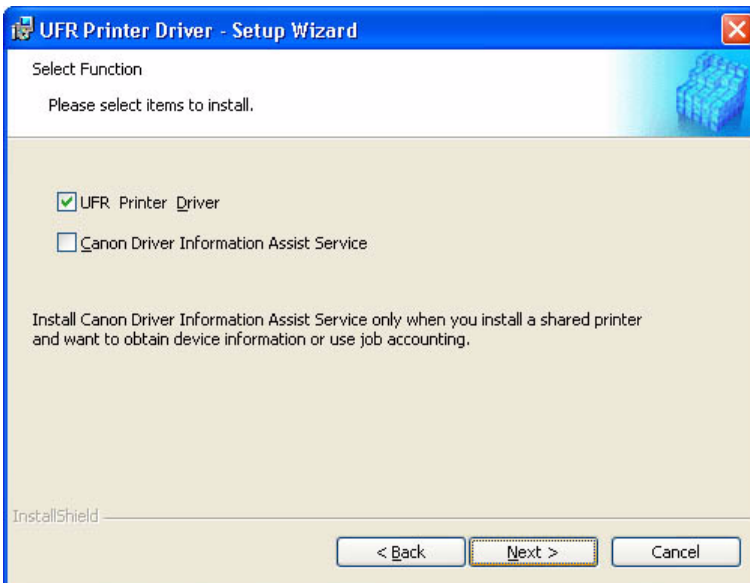
F-1-13

5) Check to see that [Install Printer Driver through a USB Connection] is not checked (not selected); then, click [Next].



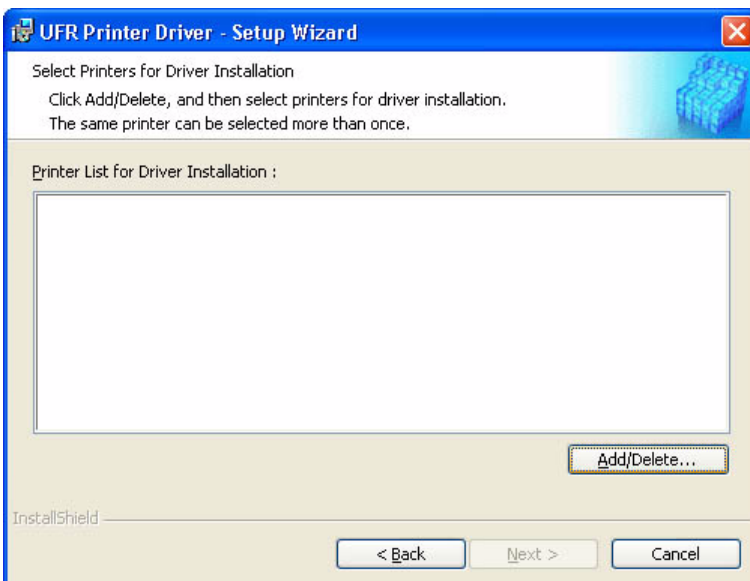
F-1-14

6) Check to see that [UFR Printer Driver] is checked (selected); then, click [Next].



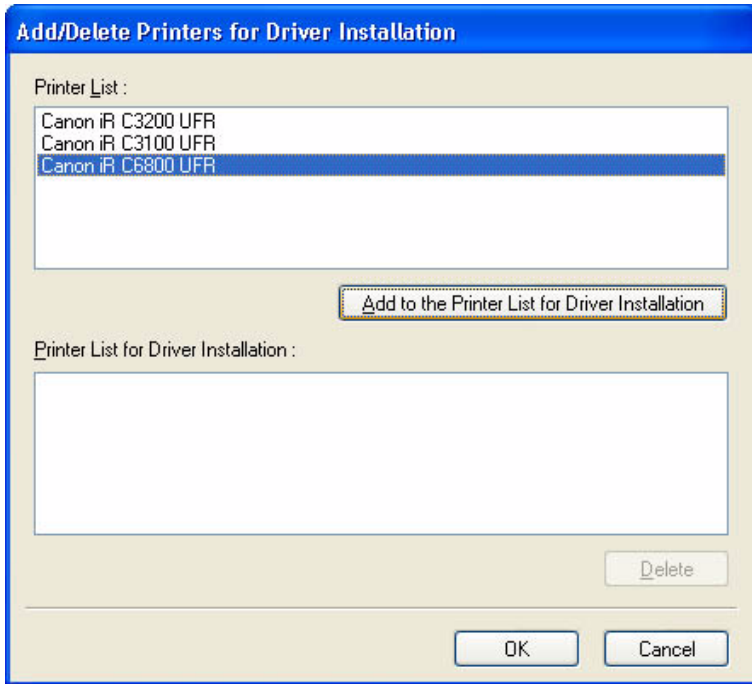
F-1-15

7) Click [Add / Delete].



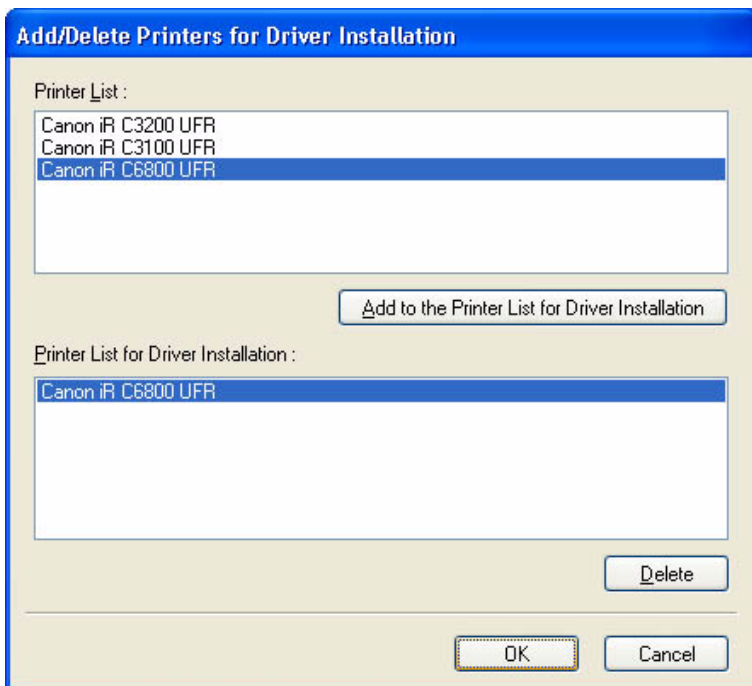
F-1-16

8) Select [Canon iR C6800 UFR]; then, click [Add to the Printer List for Driver Installation].



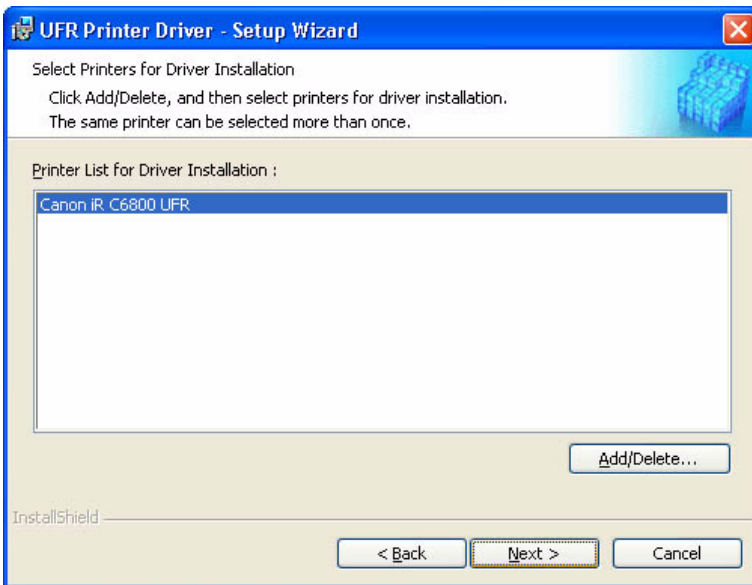
F-1-17

9) Check to see that [Canon iR C6800 UFR] has been added; then, click [OK].



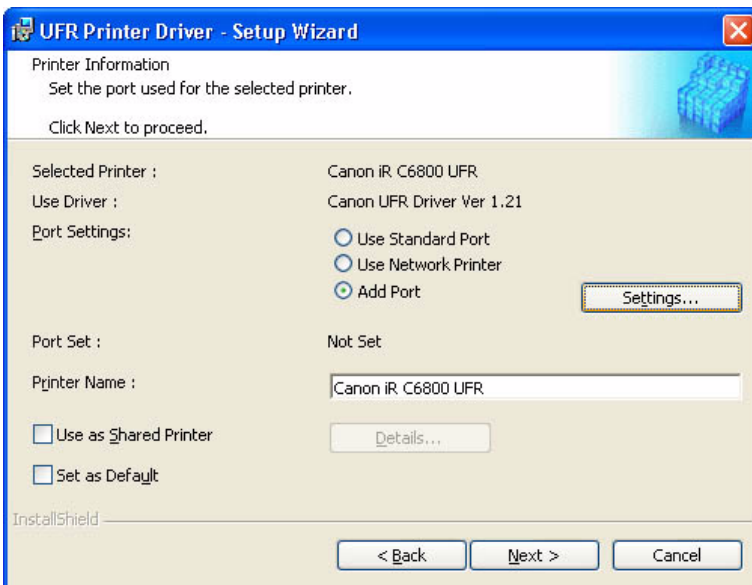
F-1-18

10) Select [Canon iR C6800 UFR], and click [Next].



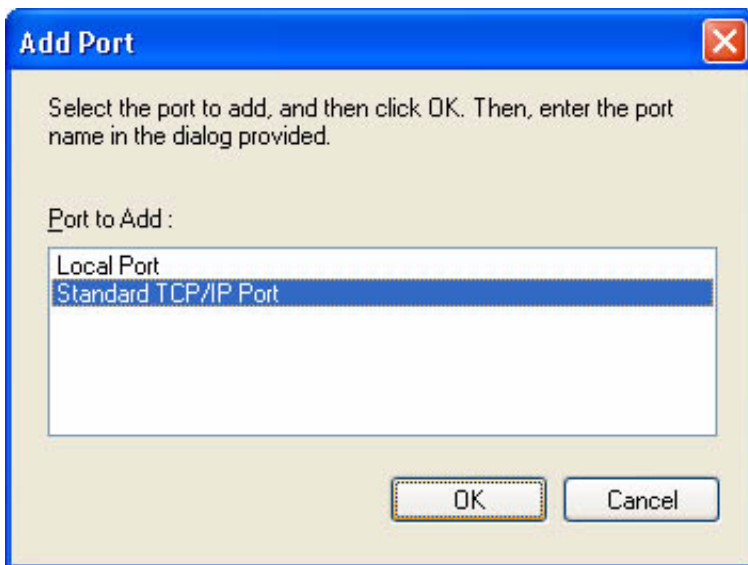
F-1-19

11) Select [Add Port], and click [Settings].



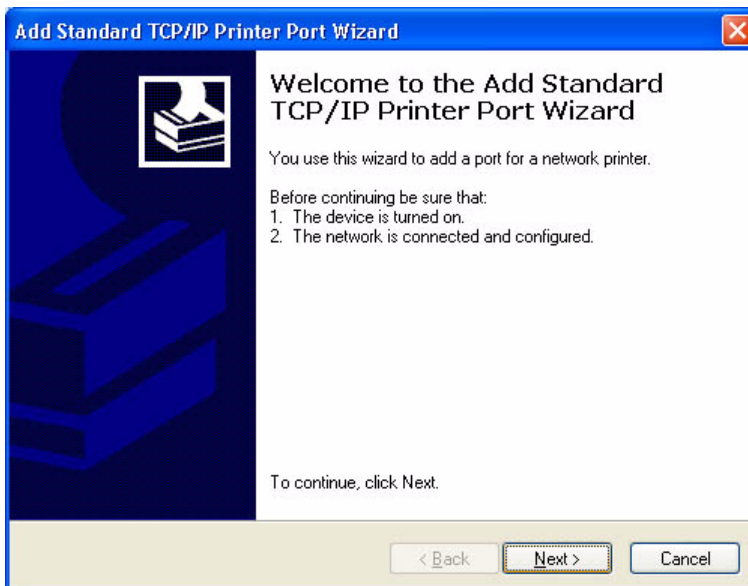
F-1-20

12) Select [Standard TCP/IP Port], and click [OK].



F-1-21

13) See that the Standard TCP/IP Printer Port Install Wizard starts up; then, click [Next].

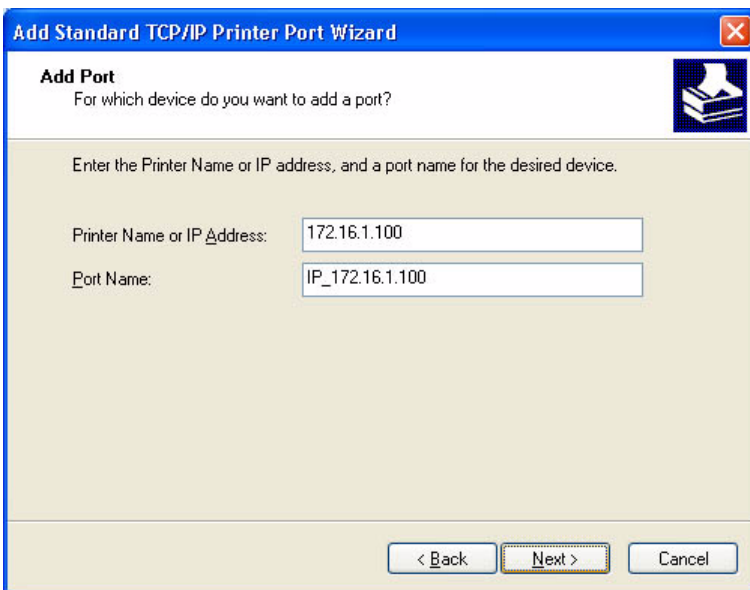


F-1-22

14) Enter the IP address of the iR C6800 for [Printer Name or IP Address]. Use the IP address you found out in the pervious chapter, i.e., "Collecting Information Before Making Settings ," or that is indicated on the printout.

Note:

- By default, the name of the port is "IP_(IP address)," with the port name filled automatically.
- When you have entered the correct IP address, go to step 16).
- If there is a fault in the network connection, go to step 15). (The screen will appear in response to the presence of a fault.)



F-1-23

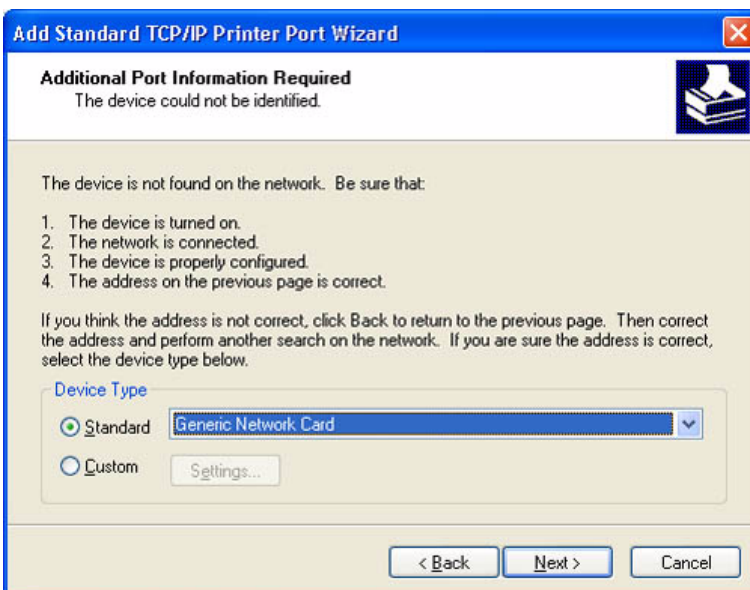
15) If the above screen appears while setting up the standard TCP/IP port,

Make checks according to the instructions on the screen:

- check the connection of the cable (on the side of the iR C6800 and PC).
- check to see that the device is on.
- check to see if that IP address is correct.

Note:

In the case of the iR C6800, connection to the network is made in about 1 min.



F-1-24

Check to see if connection is made to the network. (Use PING to check the TCP/IP communication.)

- Make the following selections: start>All Programs>Accessories>Command Prompt.



F-1-25

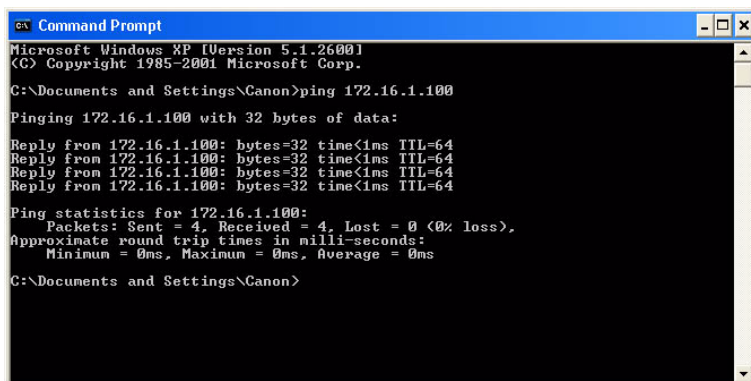
- To check the TCP/IP communication using PING, enter the IP address of the iR C6800 in response to the prompt as follows:

EX:

Type C:\>ping 172.16.1.100; then, press [Enter].

- the connection is correct if the following is indicated: Reply from 172.16.1.100: bytes=32 time<1 ms TTL=64.

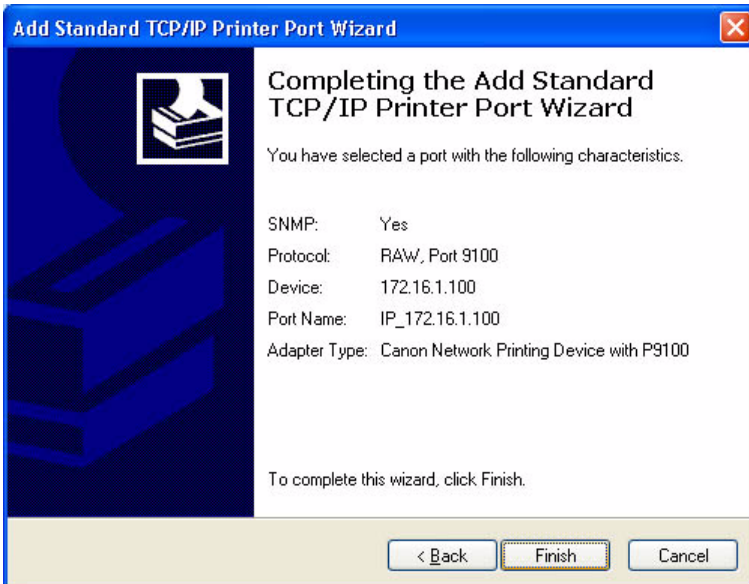
- If a time-out condition occurs, the printer is not responding; check the settings and the cable once again.



F-1-26

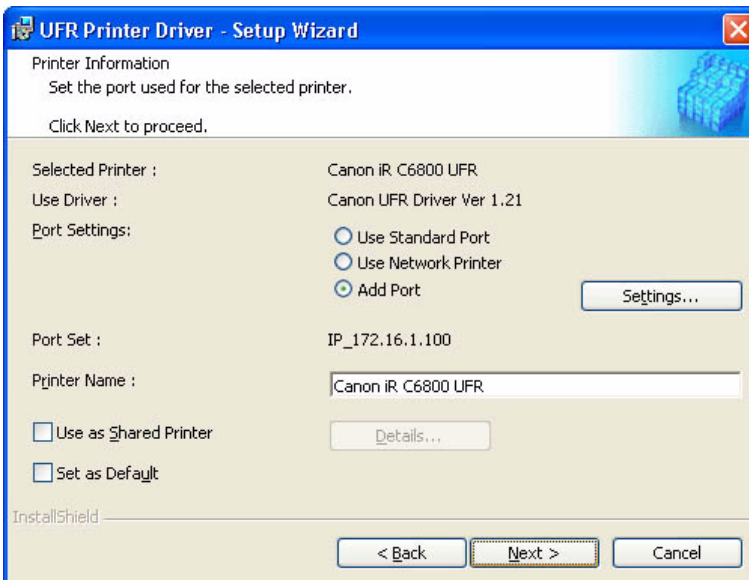
When you have made sure that the network connection is correct, click [Back] to return to step 14) of printer driver installation.

16) When a list has appeared, check that the settings are all correct; then, click [Finish].



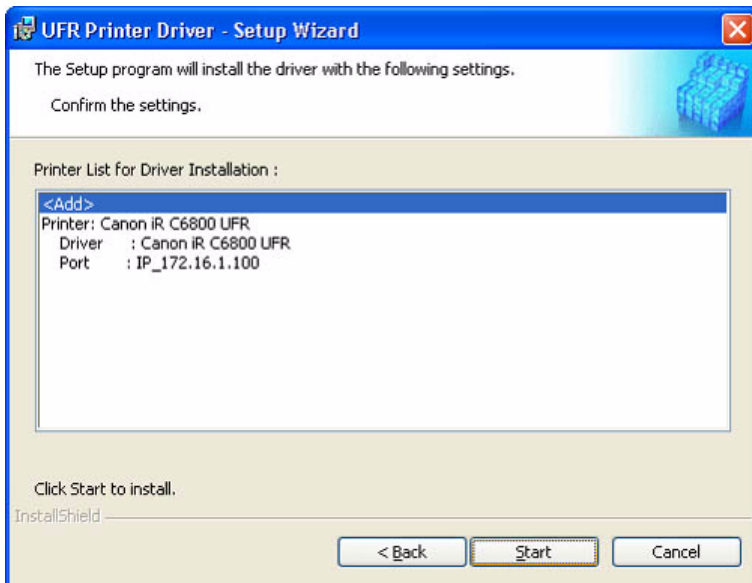
F-1-27

17) Check to see that the port has been set up; then, click [Next].



F-1-28

18) Check the settings; then, click [Start].

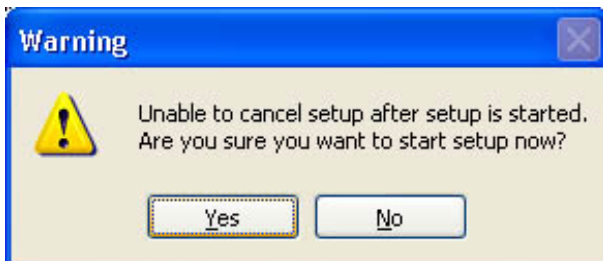


F-1-29

19) Click [Yes].

Note:

If you click [No], installation will not start.



F-1-30

20) See that installation starts.



F-1-31

21) When the End of Install screen has appeared, select [Restart my computer now], and click [Exit]. The PC will restart.

Note:

If any other application is running, you may select [Restart my computer later], and click [Exit]. Later, restart the PC manually after ending the application.



F-1-32

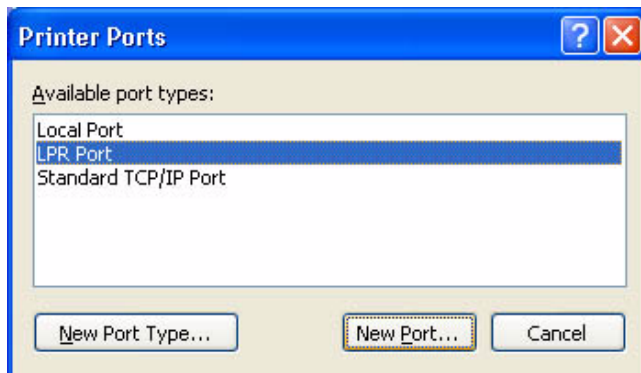
1.6 Difference Between LPR Port and Standard TCP/IP Port

0006-2903

On the iR C6800, both LPR port and standard TCP/IP port may be used side by side; however, the use of the standard TCP/IP port is recommended for the following reason:

- In the case of the LPR port (OS standard), jobs spooled on the PC will not be sent to the printer (as when about 10 jobs are being printed in succession. In a while, printing will resume, but newly added jobs may be printed, skipping the jobs that have been left out (e.g., resulting in missing sets).
- In the case of the LPR port, additional installation of software is needed.

Printer Ports



F-1-33

1.7 Installing the LPR Port (UNIX Print service) Components

0006-2904

If the standard TCP/IP port is used, you need not install the LPR port (UNIX print service).

If, because of limits imposed by the user environment, the standard TCP/IP port cannot be used, you may have to select the LPR port (UNIX print service); if such is the case, you need to separately install it, as it does not come as part of the standard installation.

Note:

The discussions herein are based on Windows XP; more or less the same steps may be used for Windows 2000.

1) Set the Windows XP CD-ROM in the CD-ROM drive. Select [Install optional Windows components].

Note:

In the case of Windows 2000, select [Install Add-On Components].

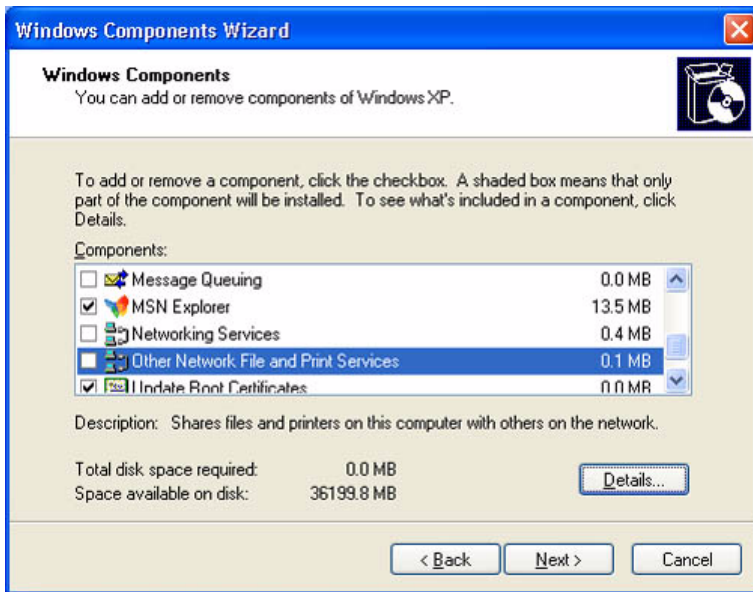


F-1-34

2) Select [Other Network File and Print Services]; then, click [Next] to go to step 4).

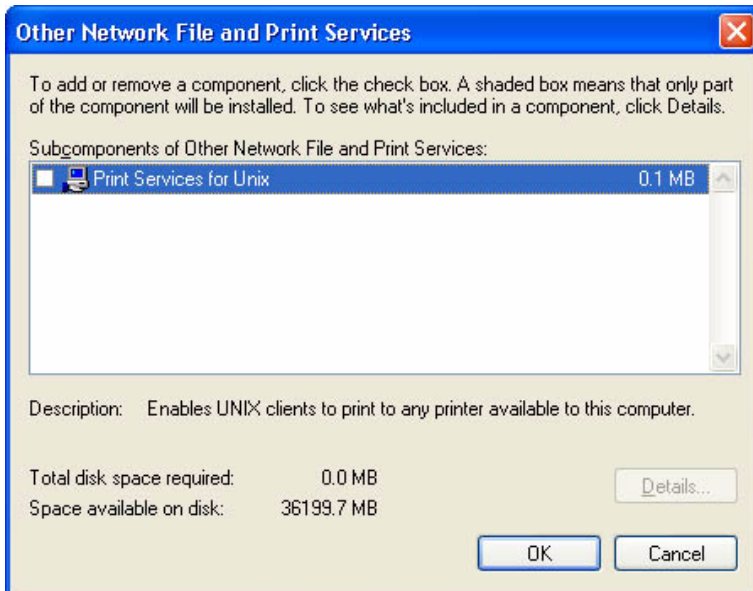
Note:

If you clicked [Details], go to step 3).



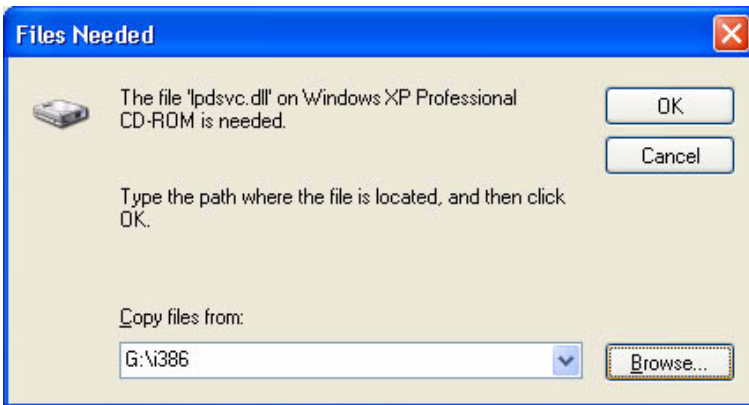
F-1-35

- 3) If you clicked [Details] for [Windows Components Wizard],
 - see that [Other Network File and Print Services] has appeared.
 - select the check box to the left of [Print Services for Unix], and click [OK].
 - when the screen you saw in step 2) has returned, click [Next], and go to step 4).



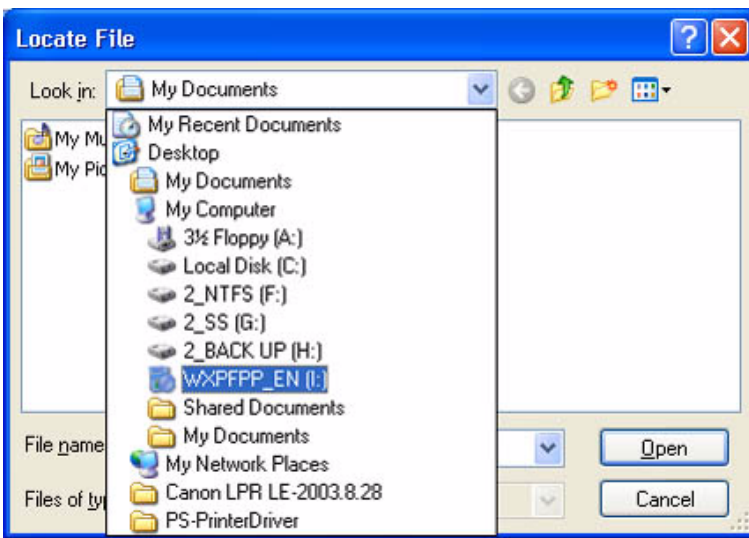
F-1-36

- 4) Click [Browse].



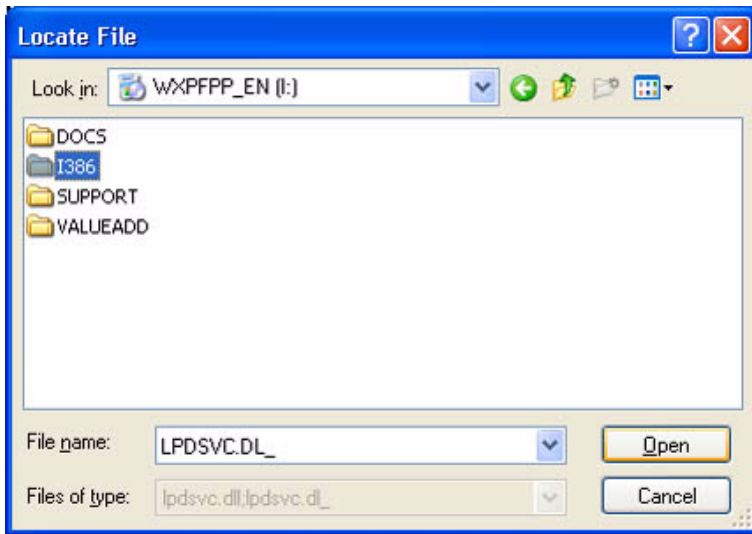
F-1-37

5) Select CD-ROM drive from [Look-in] dropdown list.



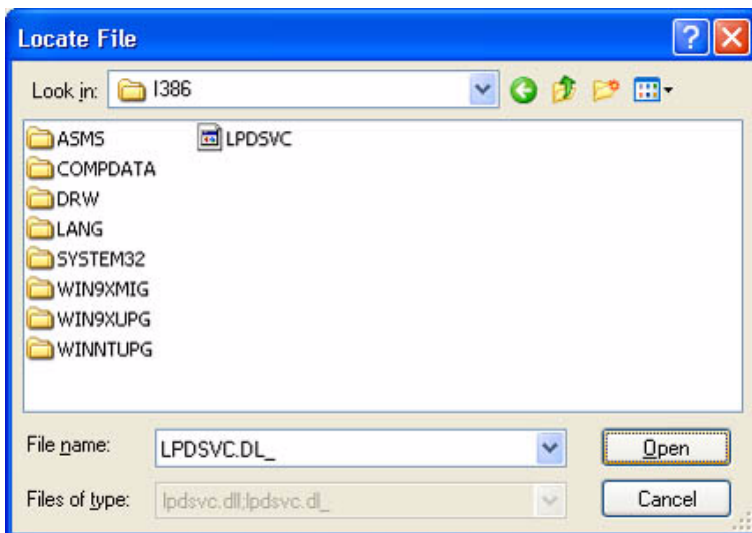
F-1-38

6) Select [I386] in the CD-ROM disk and click [Open].



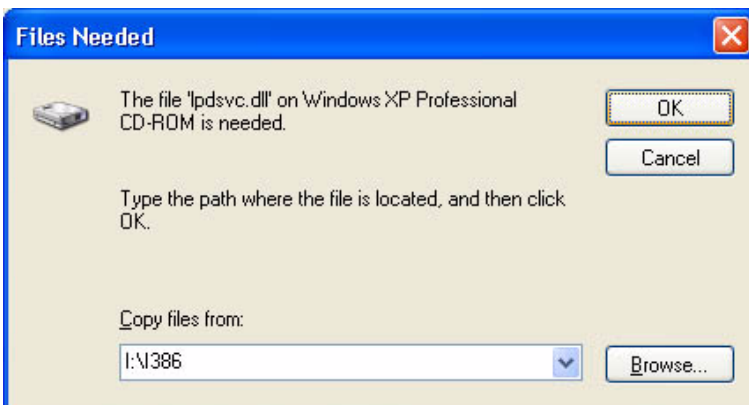
F-1-39

7) Check that [LPDSVC.DL_] is displayed in [File name] field and click [Open].



F-1-40

8) Click [OK].



F-1-41

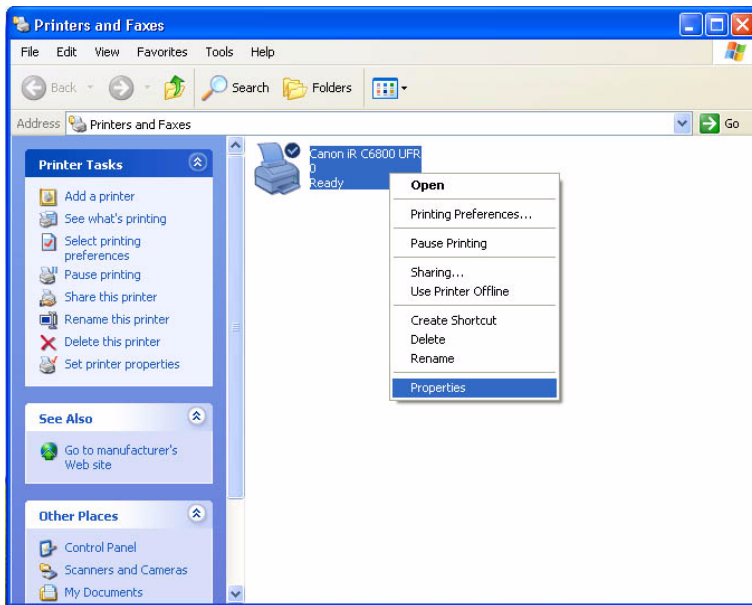
- 9) On [Completing the Windows Components Wizard] screen, click [Finish]. Click [Exit] on the Windows setup screen and remove the CD-ROM disk of the Windows XP.



F-1-42

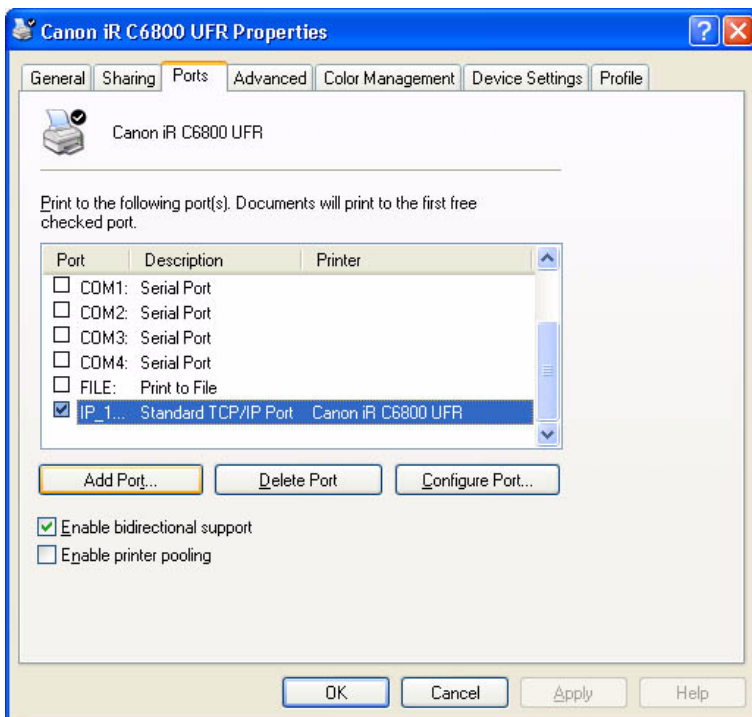
Changing from Standard TCP/IP Port to LPR Port (UNIX print service)

- 1) Right-click the printer icon; then, select and click [Properties] of the short cut menu.



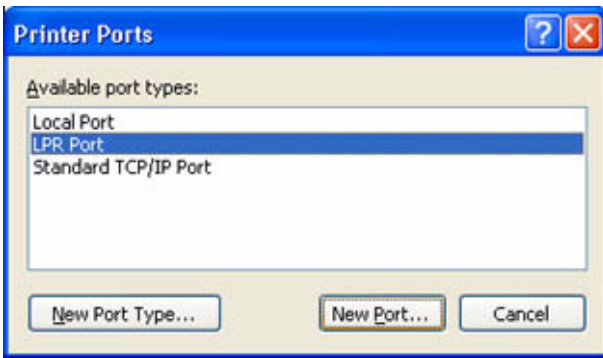
F-1-43

2) Select the [Ports] tab; then, click [Add port].



F-1-44

3) Select [LPR Port], and click [New Port].



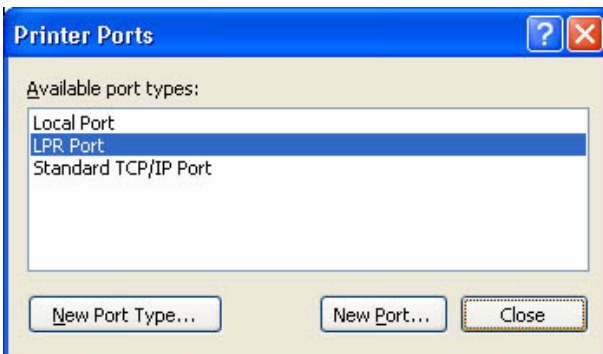
F-1-45

- 4) Enter the IP address of the iR C6800 for [Name or address of server providing lpd]; then, type "lp" for [Name of printer or print queue on that server]. Thereafter, click [OK].



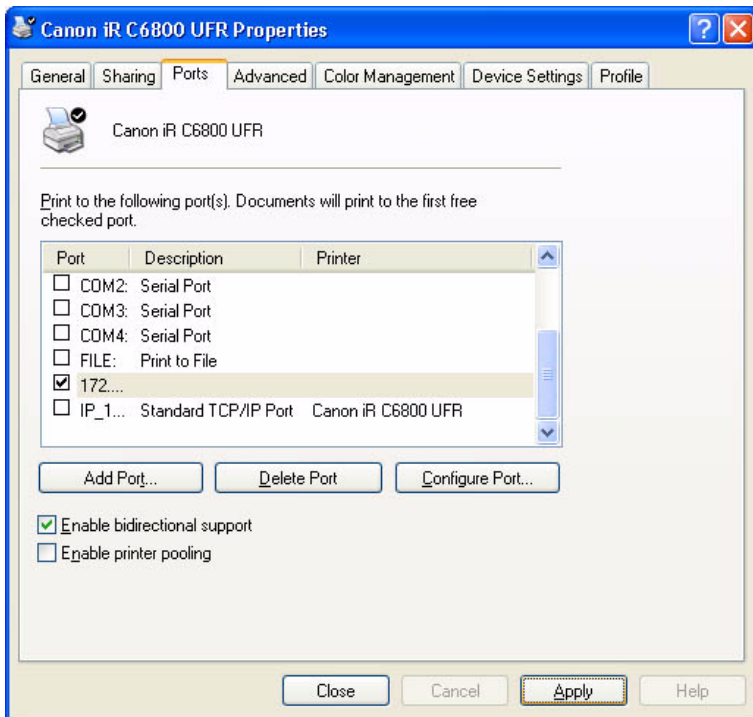
F-1-46

- 5) Click [Close].



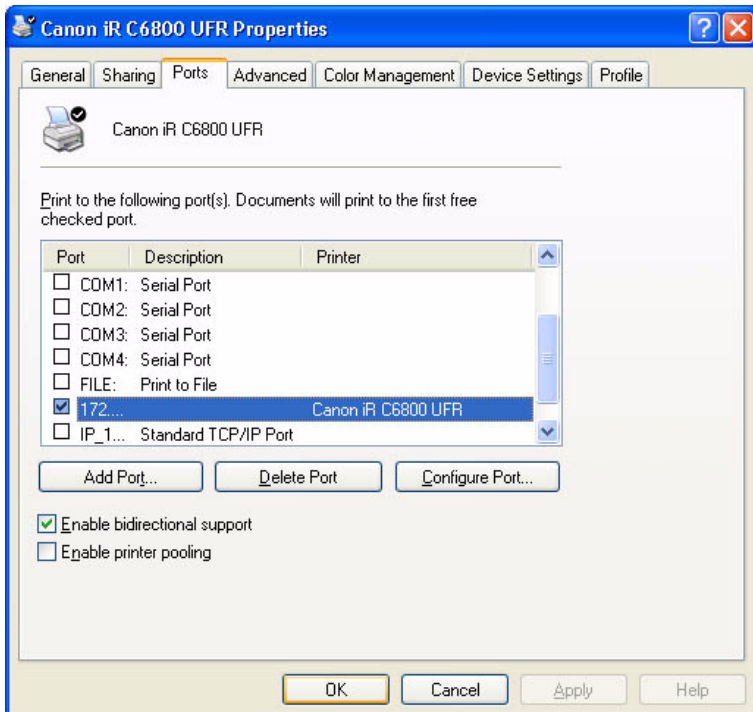
F-1-47

- 6) Check to see that the check box of the LPR port that has been newly added is checked (selected); then, click [Apply].



F-1-48

7) Click [OK].



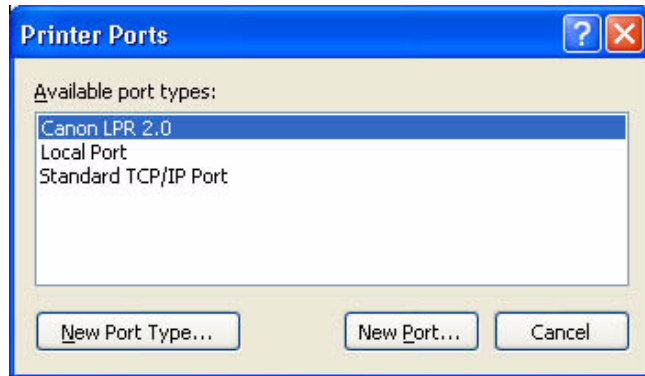
F-1-49

1.8 Canon LPR2

0006-2905

Canon LPR2 is software designed to print on a printer connected to a TCP/IP network from Windows 95/98/Me/NT4.0/2000/XP.

In the case of Windows XP/2000, Canon LPR2 may be used.



F-1-50

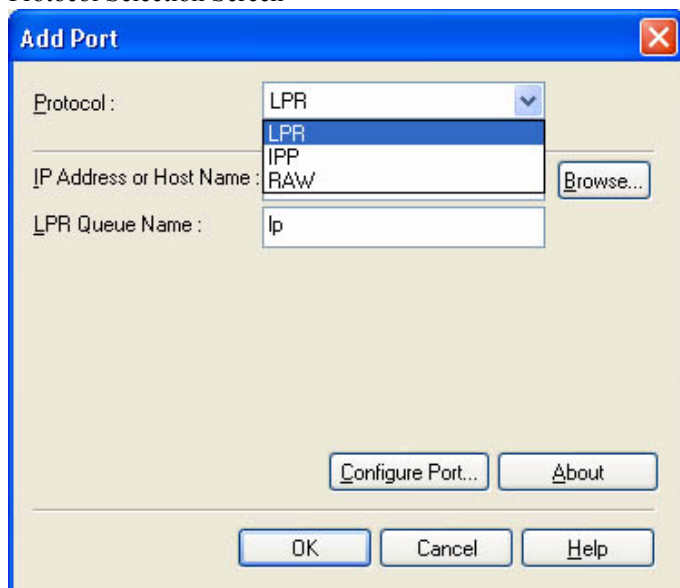
Canon LPR2 has the following functions:

Support of Multiple Ports

- Canon LPR2 permits selection of the following protocols:

- LPR
- RAW
- IPP

Protocol Selection Screen

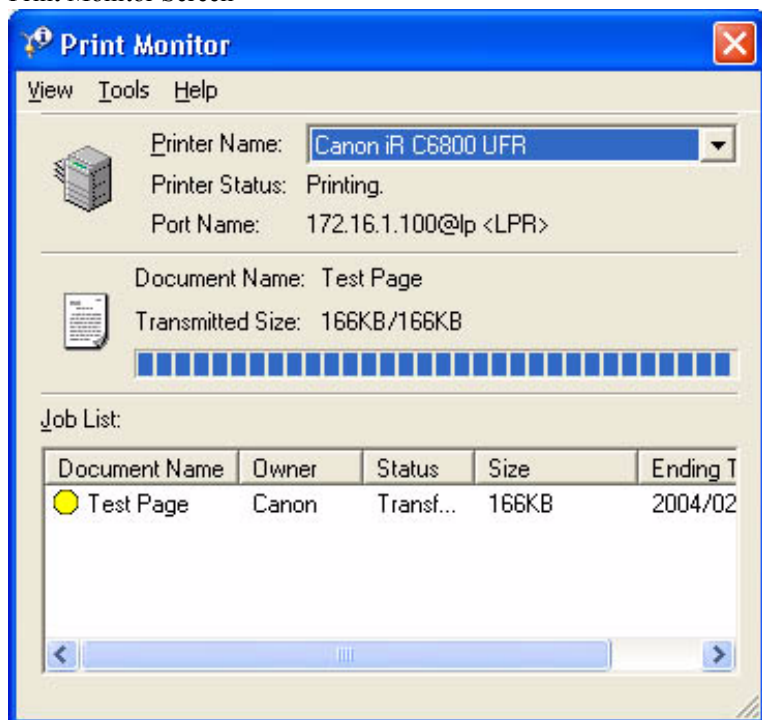


F-1-51

Monitor Screen

- The monitor to screen (Print Monitor) is displayed to suit the print instructions sent to the printer, showing the job status from the client and the status of the printer connected by way of the port monitor. The program used for the Print Monitor screen is part of the port monitor.

Print Monitor Screen



F-1-52

1.9 Installing Canon LPR2

0006-2906

If you are using standard TCP/IP port, you need not install Canon LPR2

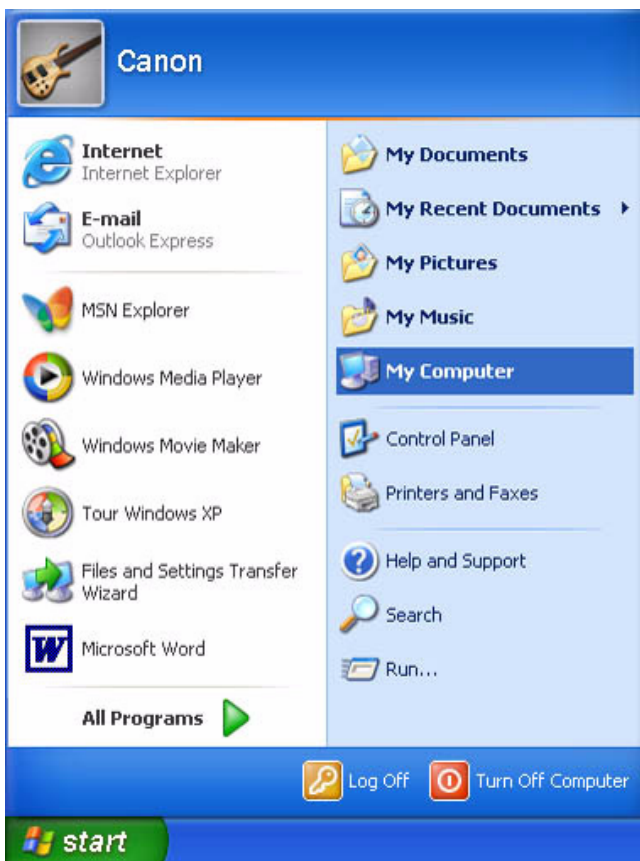
If the limits imposed by the user environment preclude the use of the standard TCP/IP port and, as a result, you need to select Canon LPR2, install it as follows:

1) Set the User Software CD-ROM in the CD-ROM drive. When the UFR CD-ROM Setup screen has appeared, click the close box to close the screen.

Note:

If the UFR CD-ROM Setup screen does not appear when you have set the User Software CD-ROM, go to step 2).

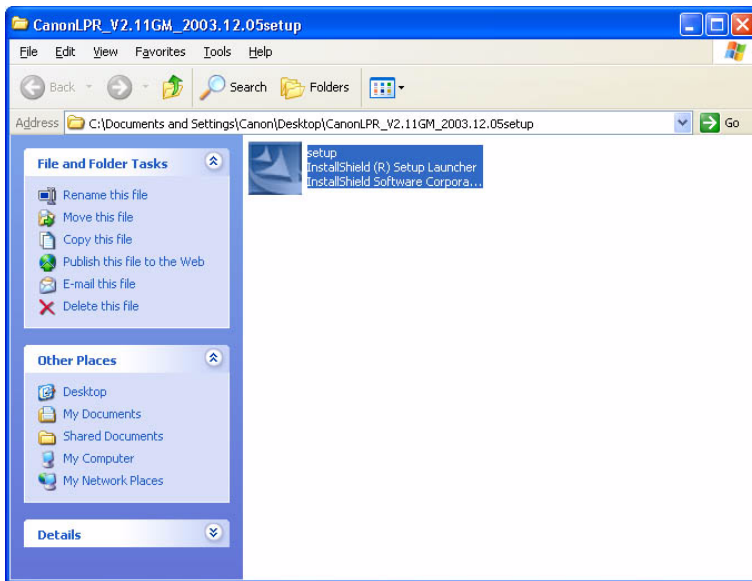
2) Click [start] and then [My Computer].



F-1-53

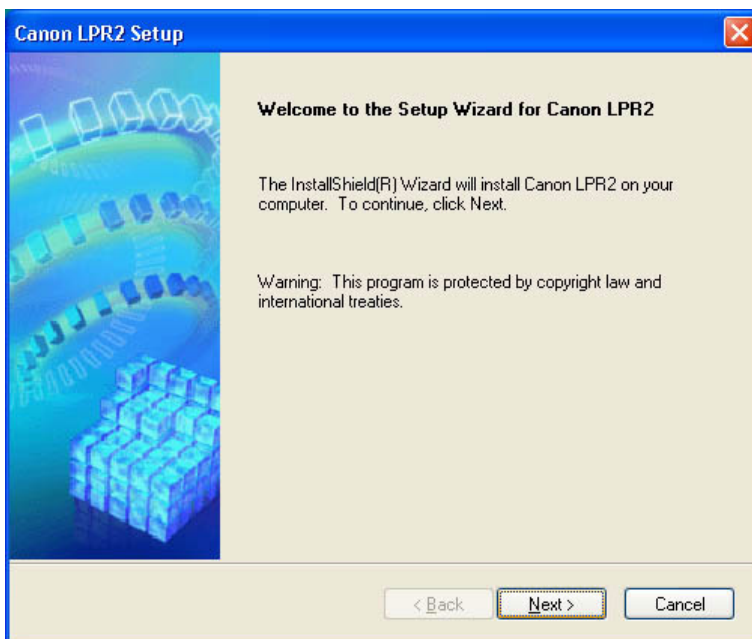
3) Double-click the CD-ROM drive.

Double-click the SETUP.EXE icon in the LPR port folder.



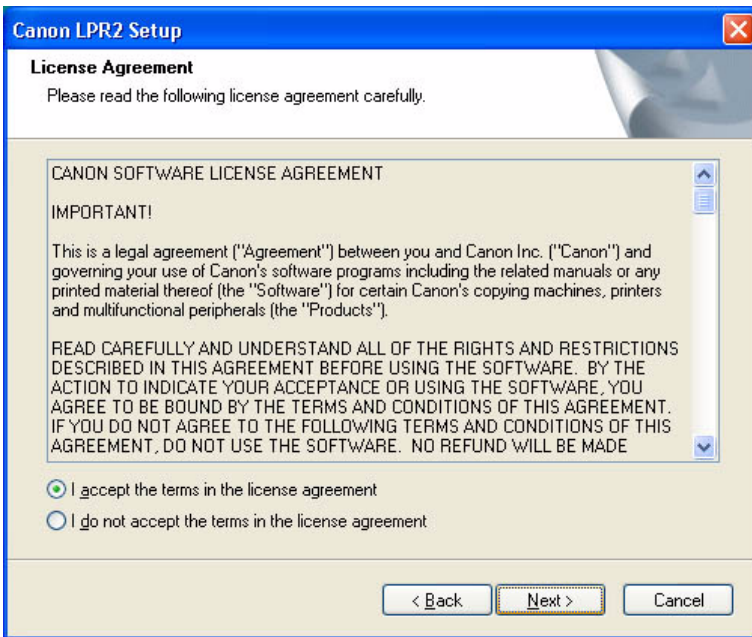
F-1-54

4) Click [Next].



F-1-55

5) Select [I accept the terms in the license agreement]; then, click [Next].

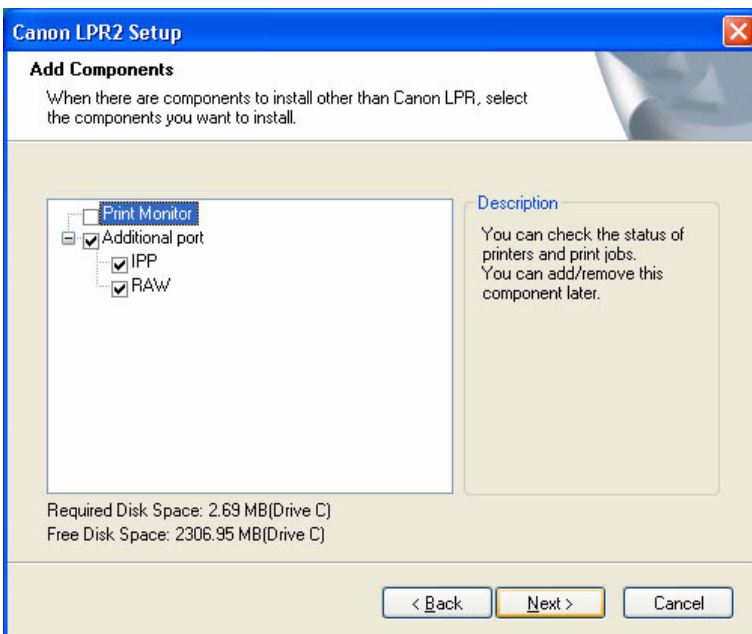


F-1-56

6) Click [Next].

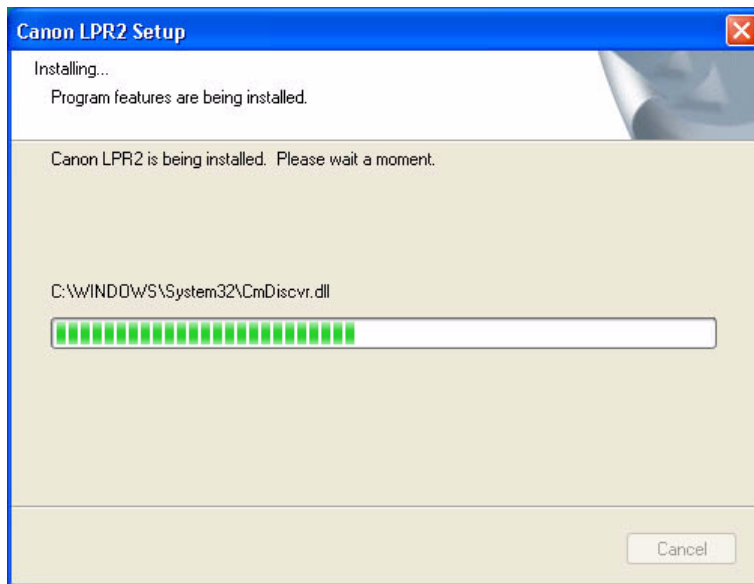
Reference:

If you check (select) the check box [Print Monitor] and click [Next], the files needed for the Print Monitor functions mentioned under "Canon LPR2" will be installed to enable these functions; as necessary, check (select) the check box.



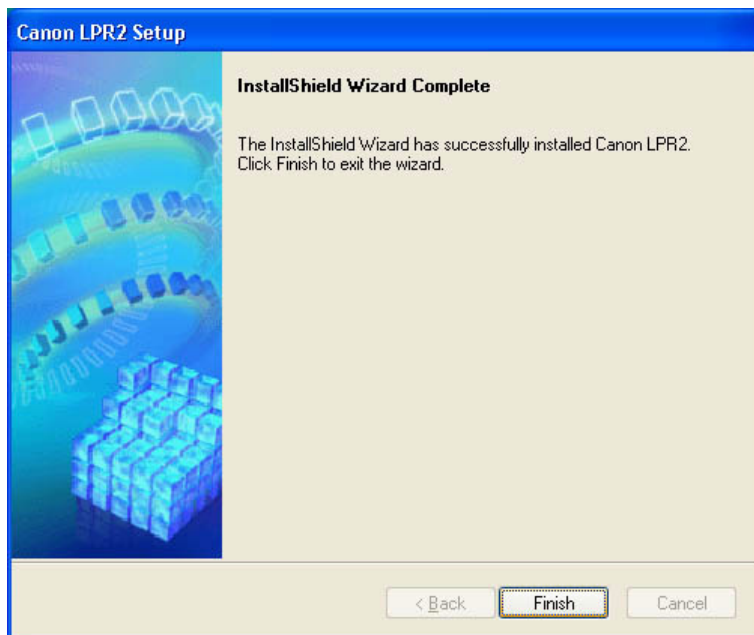
F-1-57

7) See that the installation starts.



F-1-58

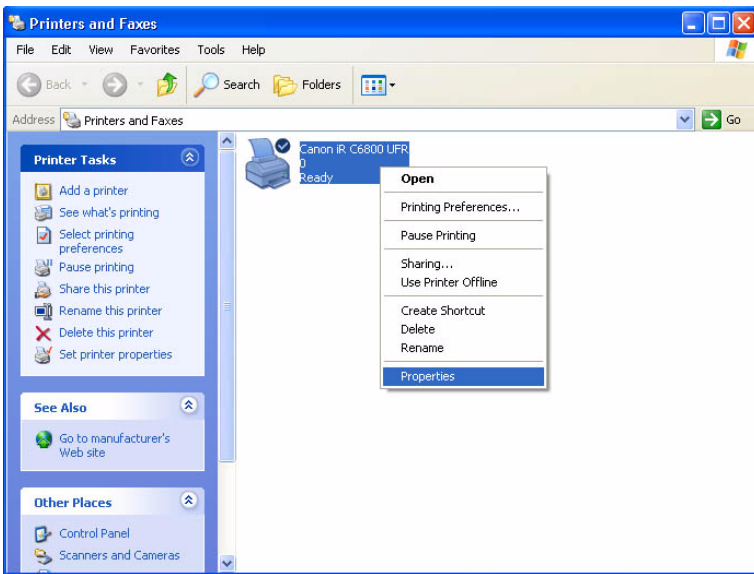
8) Click [Finish].



F-1-59

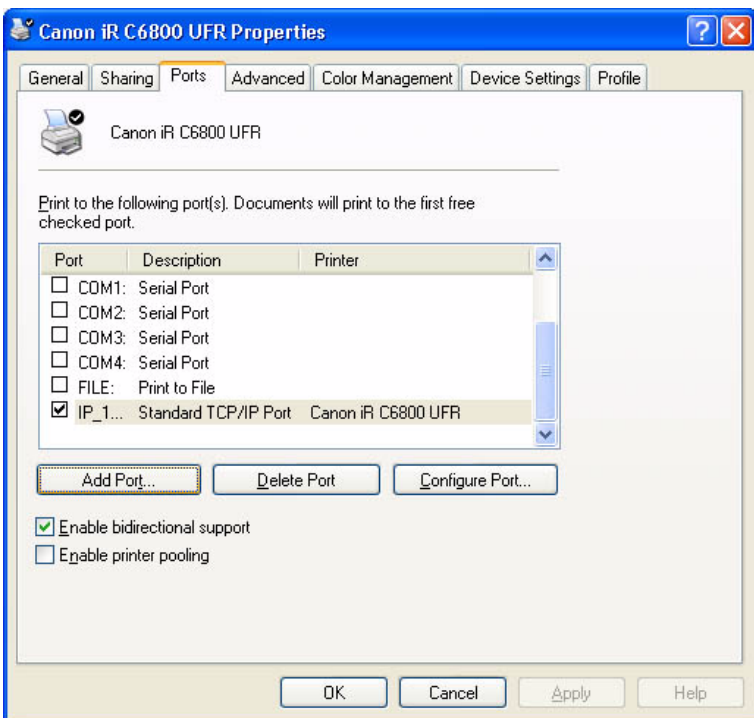
Changing from Standard TCP/IP Port to Canon LPR2 Port

1) Right-click the printer icon; then, select and click [Properties] of the short cut menu.



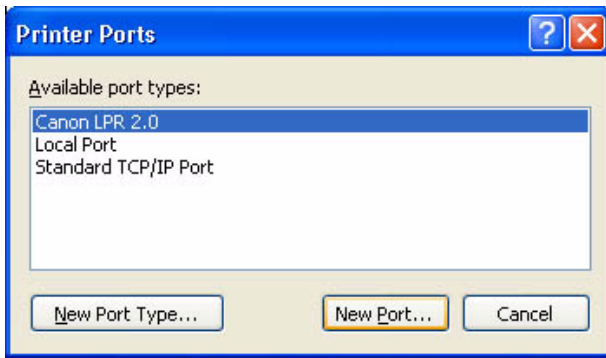
F-1-60

2) Select the [Ports] tab; then, click [Add Port].



F-1-61

3) Select [Canon LPR 2.0]; then, click [New Port].

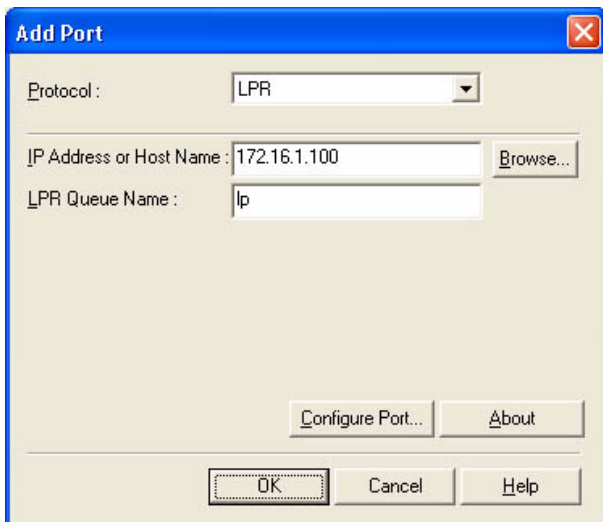


F-1-62

4) Check to see that [Protocol] indicates "LPR" [LPR Queue Name] is automatically filled with "lp." Enter the value you see for the iR C6800 (or collected as information) for [IP address or Host Name].

Note:

If you directly typed for [IP address or Host Name], click [OK] after done so; then, go to step 5).

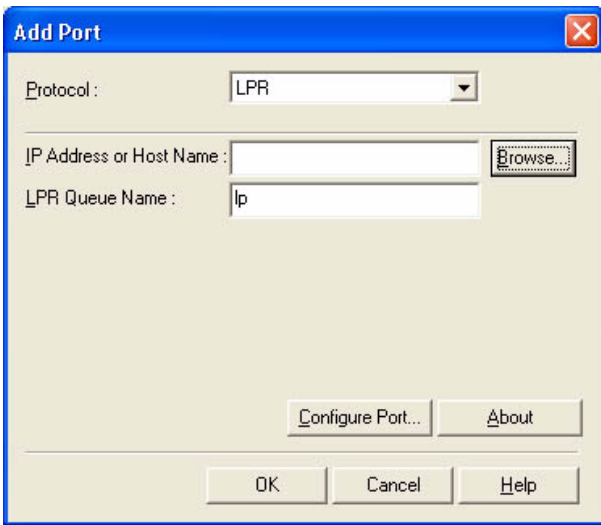


F-1-63

Reference:

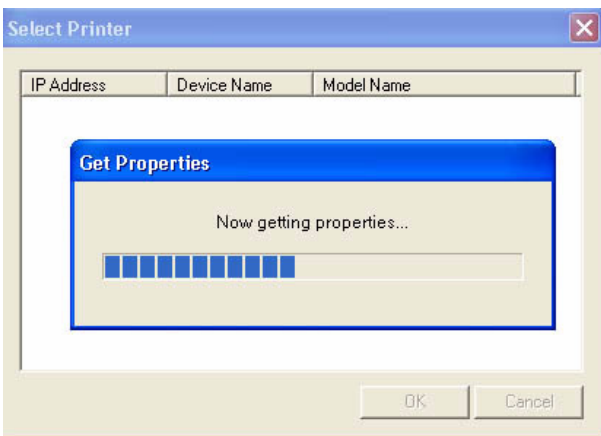
At this point, you may obtain information from the device automatically and indicate the IP address by clicking [Browse] without directly typing in [IP Address]; to do so, go through the following:

1. Click [Browse].



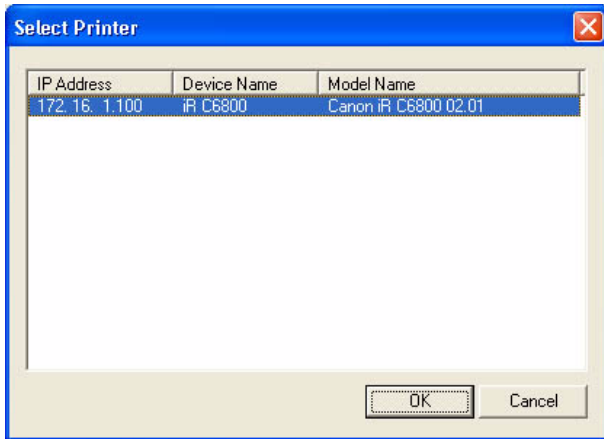
F-1-64

2. See that a screen has appeared to indicate that information is being collected from the device.



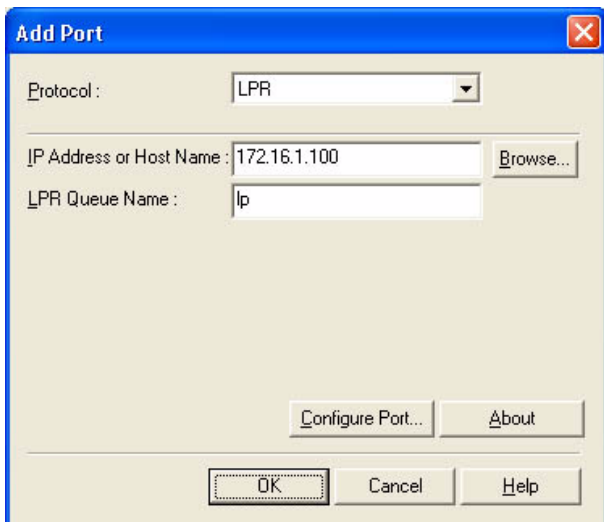
F-1-65

3. See that the device information that has automatically been collected is indicated (IP Address / Device Name / Model Name). Click [OK].



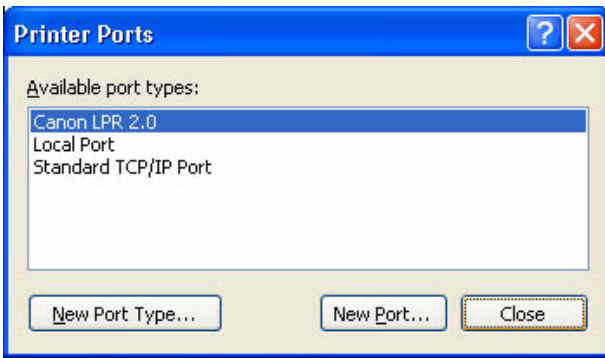
F-1-66

4. Check that the IP address or host name has automatically been collected and indicated; then, click [OK], and go to step 5).



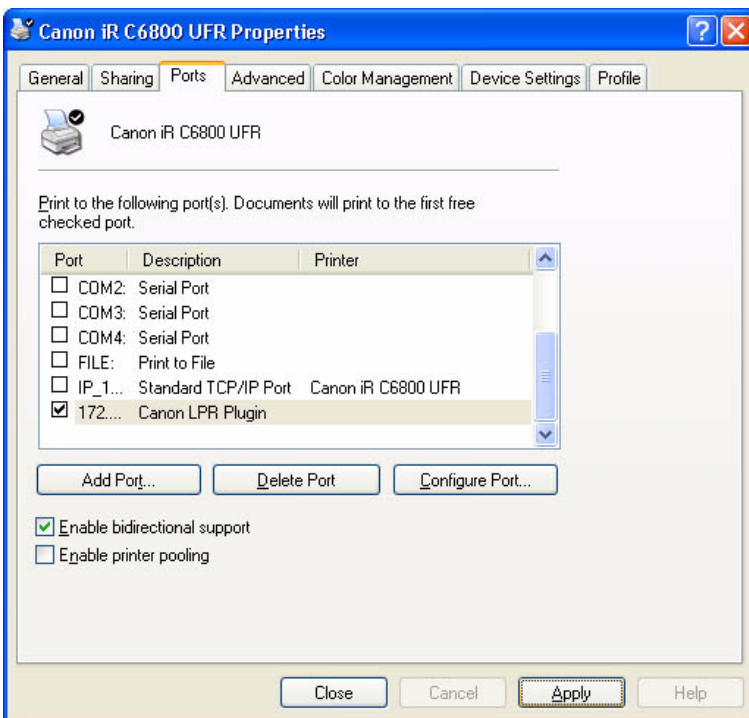
F-1-67

- 5) Click [Close].



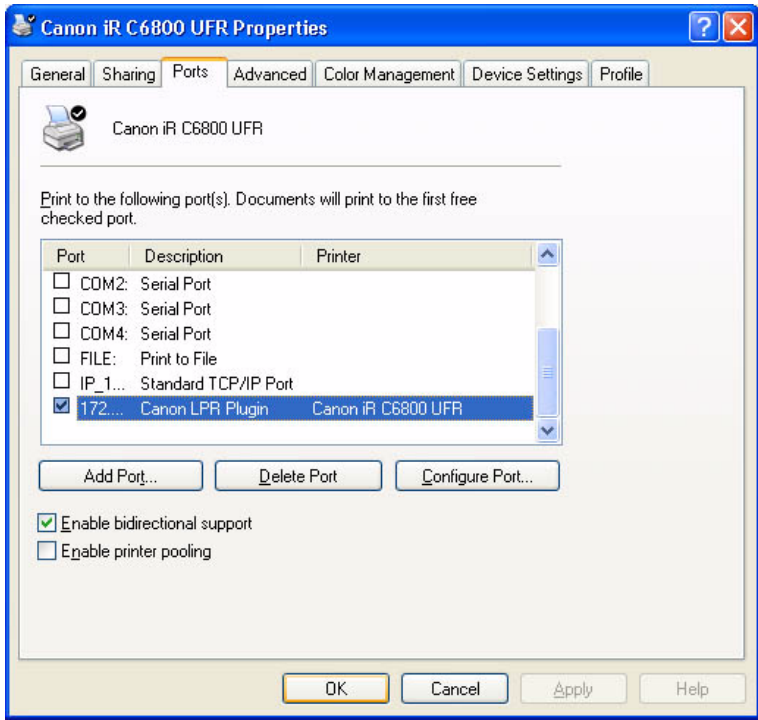
F-1-68

6) Check to see that the check box is checked (selected) for the Canon LPR Plugin as a newly added port and that the port has been changed. Then, click [Apply].



F-1-69

7) Click [OK].



F-1-70

Opening Printer Properties and Test Printing From a PC

< Windows XP Display >

Category Display (standard install)

- make the following selections: start>Control Panel>Printers and Other Hardware>Printers and Faxes>printer to open (right-click)>Properties>Print Test Page.

Classic Display

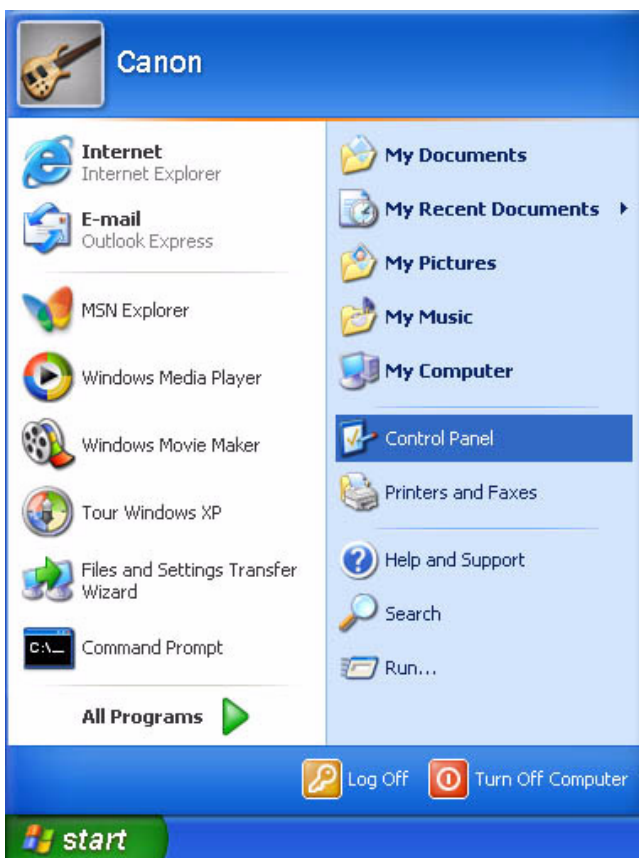
- make the following selections: start>Settings>Control Panel>Printers and Faxes>printer to open (by right click)>Proprieties>Print Text Page.

< Windows 2000 Display >

- make the following selections: Start>Settings>Printers>printer to open (by right-click)>Properties>Print Test Page.

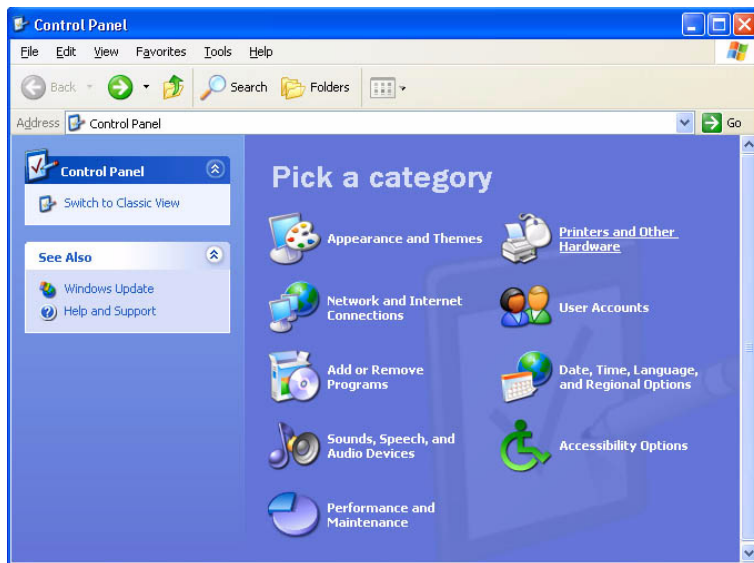
Windows XP Category Display

1) Click [start] and then [Control Panel].



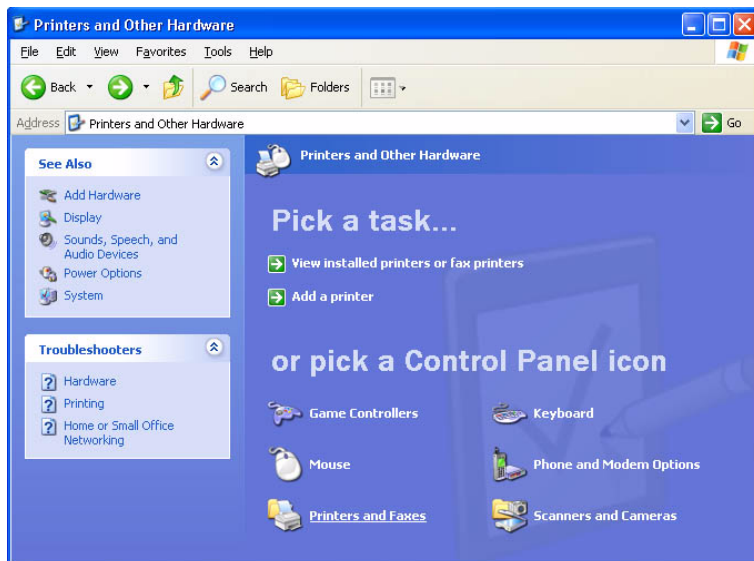
F-1-71

2) Select and click [Printers and Other Hardware].



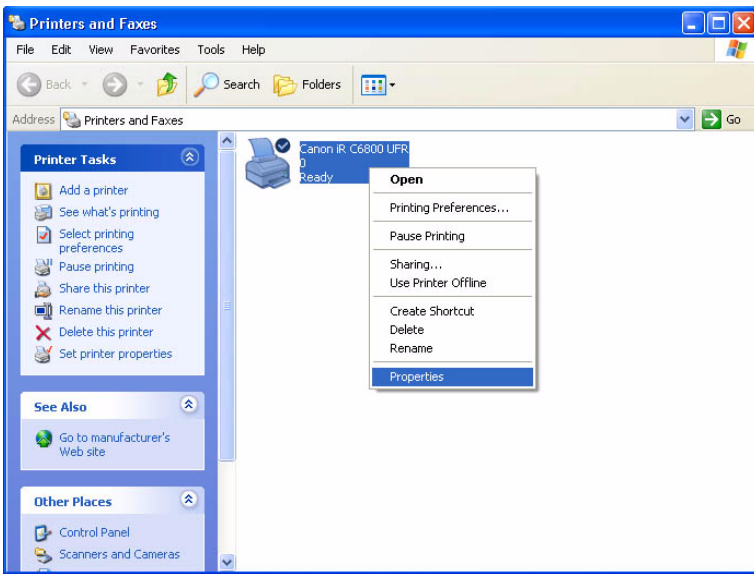
F-1-72

3) Select and click [Printers and Faxes].



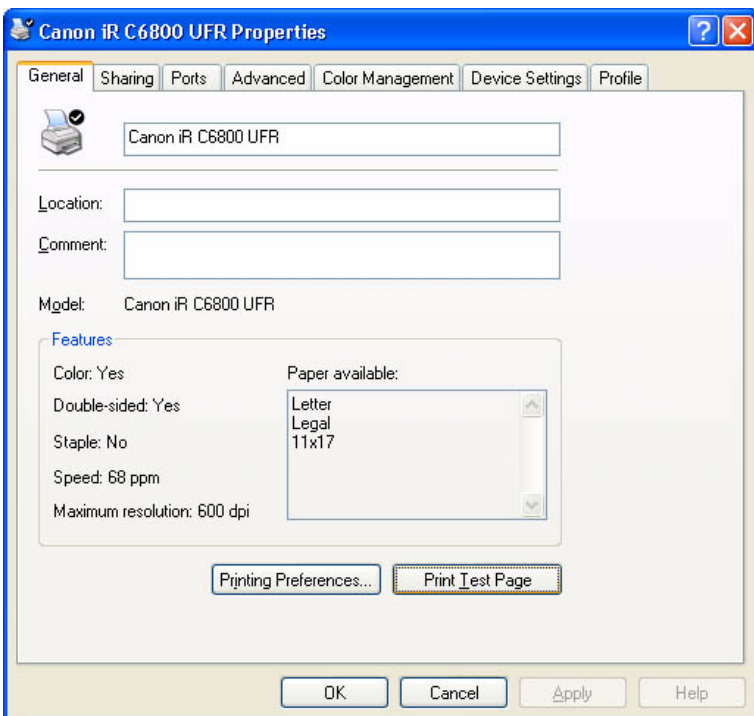
F-1-73

4) Right-click the printer icon, and select and click [Properties].



F-1-74

5) When the Properties screen has appeared, click the [General] tab and [Print Test Page] if you want to execute text printing.



F-1-75

Checking the Printer of First Choice

-To find out which printer is selected as the printer of first choice, make the following selections, and see which

has its icon checked (selected): start>Control Panel>Printers and Other Hardware>Printers and Faxes.



Set as Default Printer



Not Set as Default Printer

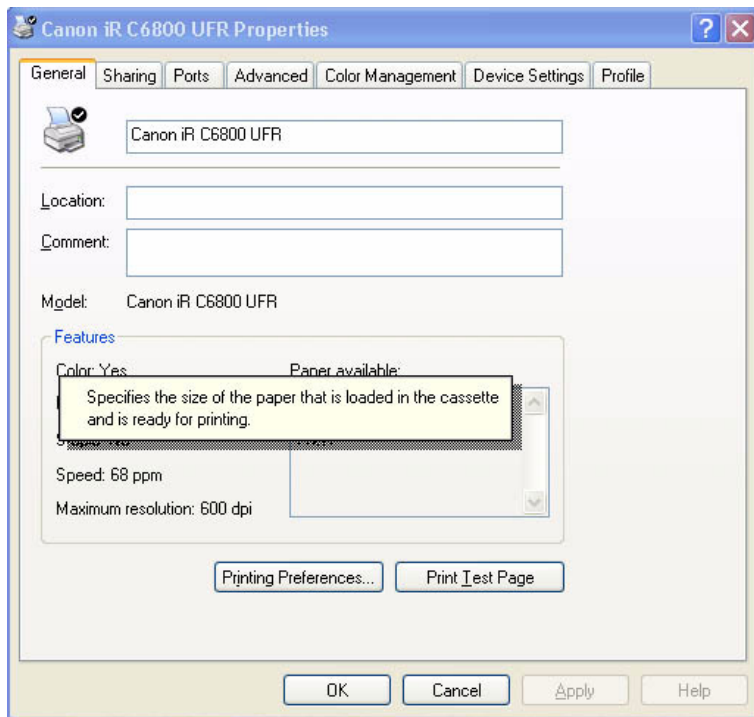
F-1-76

To Select a Different Printer

- Right-click the icon of the printer you want to use; then, put a check mark under [Printer of First Choice].

To Display Help

- The Printer Driver Display screen offers a Help guide.
- To display the Help guide, click the ? symbol found in the upper right corner of the Windows screen, point the cursor to the item you want to check, and left-click it.



F-1-77

1.11 Switching Between RAW and LPR

0006-2909

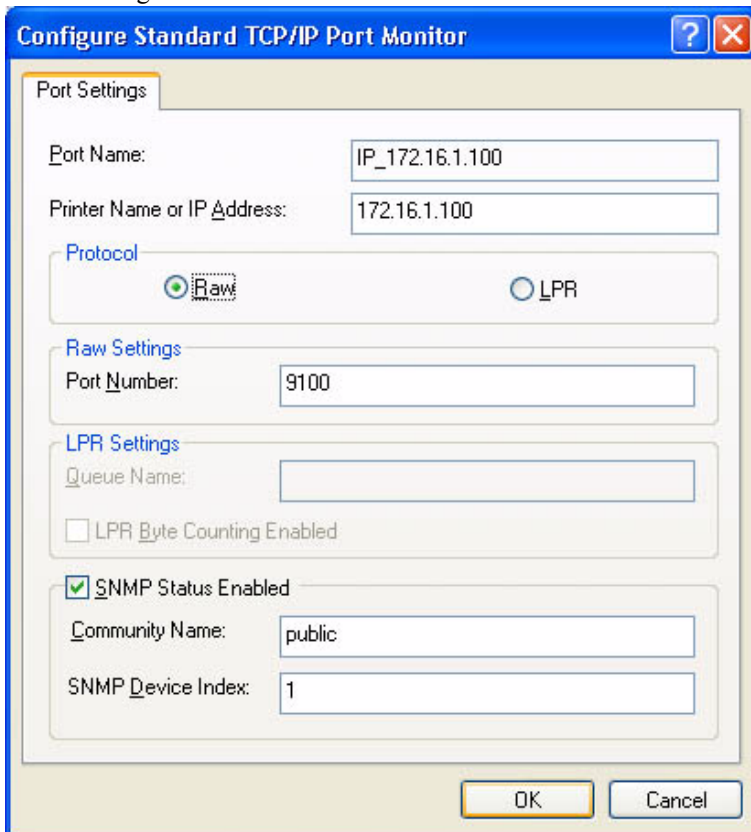
Switching Between RAW and LPR

- 1) Make the following selections: start>Control Panel>Printers and Other Hardware>Printers and Faxes>printer to open (right click)>Properties>Ports (tab)>(select the desired item; the currently selected printer is checked)>Configure Port.
- 2) Specify either operation for RAW procedure under [Raw] and [LPR] within [Protocol] or operation for LPR.

< RAW >

- Type '9100' for [Port Number].

RAW Setting



F-1-78

< LPR >

- Type 'lp' for [Queue Name] in the case of an iR C6800.
- Make the appropriate setting for [LPR Byte Counting Enabled].
- Type appropriate settings for [SNMP Status Enabled], [Community Name] and [SNMP Device Index] within the item.

LPR Setting

Configure Standard TCP/IP Port Monitor

Port Settings

Port Name: IP_172.16.1.100

Printer Name or IP Address: 172.16.1.100

Protocol

Raw LPR

Raw Settings

Port Number: 9100

LPR Settings

Queue Name: lp

LPR Byte Counting Enabled

SNMP Status Enabled

Community Name: public

SNMP Device Index: 1

OK Cancel

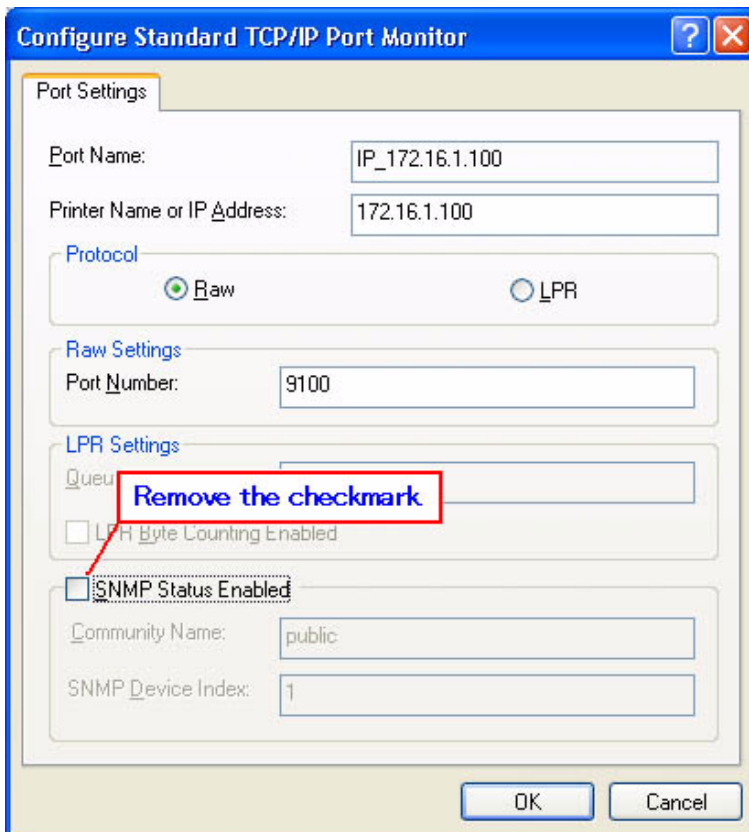
F-1-79

1.12 Remedy for Faults Caused by the Environment (30 client PCs or more)

0006-2910

If SMB connection fails or takes about 30 min, go through the following

start>Control Panel>Printers and Other Hardware>Printers and Faxes>(right click the printer icon>Properties>Ports(tab)>Standard>(select[Standard TCP/IP Port]by putting a check mark in the check box>Configure Port(deselect by removing the check mark from[SNMP Status Enabled]>OK(click).



F-1-80

Mar 18 2004

